

STAFFORDSHIRE

COUNTY SHOW



WEDNESDAY & THURSDAY

31st May & 1st June 2023

SCHEDULE

Light Horse, Heavy Horse

Private Driving

Online Entries Close

1st May 2023

MAIN SHOW SPONSORS



Horse Section Secretary: Mrs G Jones, Corner House, The Green,
Barton-under-Needwood, Burton-on-Trent, DE13 8JD

Email: gilly.jones@btinternet.com Mobile 07801 817715

www.staffscountyshowground.co.uk

CONTENTS

	Page
Provisional Timetable – Wednesday/Thursday	3 - 4
Entry Closing Dates	5
Exhibitor Passes	5
Prize Money, Cups & Trophies	5
Qualifiers and Conditions	6
Supreme In-Hand Championship.....	7
Senior Horses and Ponies	8
Young Handler	10
Senior Local Rider	10
Junior Local Rider.....	10
Training Stakes.....	11
Unaffiliated Ridden Horses	12
Ridden Hunters.....	13
Ladies Show Horse.....	14
Open Working Hunter	15
Amateur Home Produced.....	16
Hacks & Riding Horses.....	17
Cobs	18
Working Show Horse	19
Retrained Racehorses.....	20
Show Hunter Pony	21
Unaffiliated Ridden Ponies	22
Fancy Dress.....	22
Working Hunter Pony	23
Show Ponies.....	24
Welsh Part-Breds	26
Welsh Mountain Ponies – Section A.....	26
Welsh Ponies - Section B	27
Welsh Ponies of Cob Type -Section C	28
Welsh Cobs - Section D	28
Shetland Ponies	29
Mixed Mountain & Moorland In-Hand.....	30
Heritage Ridden Mountain & Moorland.....	31
Young Riders/Amateurs Mountain & Moorland	32
Heritage Mountain & Moorland WHP.....	33
Skewbald and Piebald.....	34
Traditional Gypsy Cobs	35
Private Driving	37
Trade and Agricultural Turnouts.....	38
Shires and Heavy Horses	38
Miniature Horses	40
Rules and Regulations.....	41
Showground Location and Directions.....	42

STAFFORDSHIRE COUNTY SHOW – WEDNESDAY 31st May
PROVISIONAL TIMETABLE (May be subject to change according to entries)

RING 1	RING 2	RING 4/5 combined	RING 4/5 cont'd	RING 6	MAIN RING
<p><u>8am Training Stakes</u> <u>Class</u> 12 50cms 13 60cms 14 75cms</p> <p><u>Not before 10.30am WHP</u> <u>Class</u> 58 Tiny Tots 59 Cradle Stakes 60 Restricted Nursery Stakes 61 RIHS Nursery Stakes Mini Championship</p> <p>62 Mixed Height Novice 63 RIHS Open 133cms 64 RIHS Open 143cms 65 RIHS Open 153cms 66 RIHS Open Intermediate Open Championship</p> <p><u>Not before 2pm</u> <u>M & M WHP</u> <u>Class</u> 124 Mixed Height Novice 125 Mixed Height Open</p>	<p align="center">Conformation Ring</p>	<p><u>8am SHP</u> <u>Class</u> 49 Mixed Height Novice 50 Mixed Height Open 51 First Pony 52 Lead Rein Mini Championship</p> <p><u>Not before 9.15am Unaffiliated</u> <u>Ridden Ponies</u> <u>Class</u> 53 Mixed Height SP/SHP 54 Mixed Breeds M&M 55 Lead Rein 56 'Have a Go' First Ridden</p> <p><u>Not before 11.15pm</u> <u>Heritage M& M</u> <u>Class</u> 113 RIHS Lead Rein 114 RIHS First Ridden Mini Championship 115 RIHS Small Breeds 116 RIHS Welsh A & B 117 RIHS Welsh C & D 118 RIHS N Forest/Connemara 119 RIHS Large Breeds Open Championship</p>	<p><u>Not before 3pm</u> <u>Show Ponies</u> 67 Mixed Height Novice 68 RIHS 148cms 69 RIHS 138cms 70 RIHS 128cms Open Championship</p> <p>71 RIHS First Ridden 72 RIHS Lead Rein Mini Championship</p>	<p><u>8.45am Junior Local Rider</u> <u>Class</u> 11 Under 16 years</p> <p><u>10am Miniature Horses</u> <u>Class</u> 142 Stallion 143 Mare/Gelding 144 Youngstock Championship</p> <p><u>11.30am In-Hand Heavy Horses</u> <u>Class</u> SH1 Clydesdale/Suffolk/Percheron SH2 Shire Stallion SH3 Shire Gelding SH4 Shire Barren Mare SH5 Colt/Filly/Gelding 2yrs old SH6 Yearling SH7 Brood Mare SH8 Foal SH9 HOYS Shire Horse of the Year Shire In-Hand Championship SH10 Young Handler</p> <p><u>Not before 3.15pm</u> <u>Fancy Dress</u> (class 57)</p>	<p>Section A <u>7.30 Heritage Novice M&M</u> <u>Class</u> 112 Mixed Breeds Novice</p> <p><u>8.15am Young Riders/Amateur M & M</u> 120 RIHS Small Breeds 121 RIHS Large Breeds 122 RIHS Intermediate Championship 123 RIHS Amateur</p> <p>Section B <u>7.45am SSADL</u> <u>Class</u> 1 Pre Senior In-Hand 2 Senior In-Hand 3 Senior-Plus In-Hand 4 Pre Senior Ridden 5 Senior Ridden 6 Senior-Plus Ridden Direct Route Championship 7 Mixed Age In Hand 8 Mixed Age Ridden Mixed Age Championship</p> <p>Section C <u>10 am Ridden Heavy Horse</u> <u>Class</u> SH11 HOYS Ridden Heavy Horse</p> <p><u>Private Driving (Classes 136/137)</u> Pre-judging 12pm Final Judging 12.30pm – 1.10pm</p> <p><u>4pm Trade & Agricultural Turnouts</u></p> <p><u>5.30pm Senior Show Jumping</u></p>

STAFFORDSHIRE COUNTY SHOW – THURSDAY 1st JUNE 2023
PROVISIONAL TIMETABLE (May be subject to change according to entries)

RING 1	RING 2	RING 4/5 combined	RING 6	RING 6 cont'd	MAIN RING
<p><u>8am Training Stakes</u> <u>Class</u> 15 70cms 16 80cms 17 90cms</p>		<p><u>7.30am Skewbald and Piebald</u> <u>Class</u> 127 RIHS Ridden n/e 153cms 128 RIHS Ridden exc 153cms 129 Open Ridden Horses & Ponies Ridden Championship 130 Open In-Hand</p> <p><u>Not before 9.30am Amateur Home</u> <u>Produced</u> <u>Class</u> 30 Amateur Home Prod. Show Horse</p> <p><u>Not before 10.15am RoR Racehorse</u> <u>Class</u> 47 TB Ridden Show Horse</p> <p><u>Not before 11am Cobs</u> 39 RIHS Lightweight 40 RIHS Heavyweight 41 RIHS Maxi Championship</p> <p><u>Not before 1pm Hacks & Riding Horses</u> <u>Class</u> 34 RIHS Small Hack 35 RIHS Large Hack Open Championship 36 RIHS Small Riding Horse 37 RIHS Large Riding Horse Open Championship</p> <p><u>Not before 3pm Senior Local Rider</u> <u>Class</u> 10 16 years and over</p> <p><u>Not before 3.45pm Trad. Gypsy Cobs</u> <u>Class</u> 132 Youngstock In-Hand 133 Senior In-Hand In-Hand Championship 134 Ridden</p>	<p><u>8am Shetlands</u> <u>Class</u> 102 Stallion or Gelding 103 Mare 104 Colt, Filly, Gelding, 2/ 3 yrs 105 Yearling 106 Small Pony, 2/3 yrs 107 Small Pony exc 4yrs Championship</p> <p><u>Not before 9.30am Welsh Part Bred</u> 73 Yearling 74 Colt, Filly, Gelding 2 yrs 75 Colt, Filly, Gelding 3 yrs 76 Mare or Gelding exc 4 yrs 77 Stallion Championship <u>Followed by Welsh Section A</u> 78 Yearling Colt 79 Yearling Filly 80 Colt, 2 or 3 yrs 81 Filly or Gelding, 2 or 3yrs 82 Novice Mare 83 Mare or Gelding exc 4yrs 84 Foal 85 Stallion Championship</p> <p><u>Not before 11.45am Welsh Section B</u> 86 Yearling 87 Colt, Filly or Gelding 2 yrs 88 Colt, Filly or Gelding 3 yrs 89 Mare or Gelding exc 4yrs 90 Stallion Championship <u>Followed by Welsh Section C</u> 91 Yearling 92 Colt, Filly or Gelding 2 yrs 93 Colt, Filly or Gelding 3 yrs 94 Mare or Gelding exc 4yrs 95 Stallion Championship</p>	<p><u>Not before 1.45 pm Welsh</u> <u>Section D</u> 96 Yearling 97 Colt, Filly or Gelding 2 yrs 98 Colt, Filly or Gelding 3 yrs 99 Mare or Gelding exc 4yrs 100 Stallion Championship</p> <p><u>Not before 3pm Mixed M & M</u> <u>In-Hand</u> <u>Class</u> 108 Large Breeds exc 4yrs 109 Large Breeds 1, 2 / 3 yrs 110 Small Breeds exc 4 yrs 111 Small Breeds 1, 2 / 3 yrs Championship</p> <p style="text-align: center;"><u>Supreme</u> <u>M & M In-Hand Championship</u></p> <p><u>Not before 4pm Young Handler</u> <u>Class</u> 9 Young Handler 7-12yrs</p>	<p><u>7.30am Ridden Hunters</u> <u>Class</u> 20 BSHA Novice 21 HOYS Small</p> <p>22 HOYS Lightweight 23 HOYS Middleweight 24 HOYS Heavyweight HOYS Championship</p> <p><u>Not before 11.15am</u> 25 Ladies Show Horse</p>
<p><u>Rings 1 & 2 combined</u></p> <p><u>Not before 11.15am Unaffiliated Horses</u> <u>Class</u> 18 Ridden Hunter, Cob, Riding Horse or Racehorse 19 Working Hunter Championship</p> <p><u>Not before 1.30pm</u> 46 Retrained Racehorse Challenge</p> <p><u>Not before 3pm</u> 26 HOYS Open Working Hunter</p> <p><u>Not before 4.15pm</u> 42 Open Working Show Horse</p>					

ENTRY DETAILS

In all classes of the Horse and Pony Section the Rules and Regulations at the reverse of this schedule shall apply. All Exhibitors will be expected to adhere to any Covid Regulations in place at the time of the Show.

ENTRY CLOSING DATES

ONLINE ENTRIES close MONDAY 1st MAY

<https://www.staffscountyshowground.co.uk/staffordshire-county-show/schedules-and-entry-forms/horse-and-pony-entry-form/>

Entries MAY re-open for a few days extra if entry numbers allow. These entries will be at an increased fee. Exhibitors should note it cannot be guaranteed that all classes will be re-opened.

EXHIBITOR PASSES

Wristbands will be issued in relation to number of entries made by each exhibitor as follows:-

Number of Animals Entered	Exhibitor Wristbands
1	3
2 / 3	4
4 / 5	5
6	6
Driving/Turnouts	3 per turnout

In the event of producers making entries, it is strongly advised that these are made separately in each owner's name. If additional passes are required, they may be purchased at the special pre-show price at the time of entry.

PRIZE MONEY (unless stated beneath classes)

Catalogued entries	1 st	2 nd	3 rd	4 th	5 th
1 - 5	£25				
6 - 10	£28	£21	£15		
11 - 15	£32	£25	£20	£15	
16 - 20	£40	£32	£26	£22	£19
Over 20	£47	£40	£34	£30	£26
Foals	£24	£16	£10	£6	

All prize money will be paid out on the day it is won from the Horse Office. Competitors must produce their completed and signed prize vouchers before money can be paid out.

CUPS AND TROPHIES

Cups and trophies remain the property of Staffordshire and Birmingham Agricultural Society. They will be presented in the ring then returned to the Horse Office by the section steward. Prize winners are not permitted to take any trophy away from the showground.

QUALIFIERS AND CONDITIONS

STAFFORDSHIRE COUNTY SHOW IS AFFILIATED TO:-

British Driving Society	Irish Draught Horse Society
British Show Horse Association	Retraining of Racehorses (RoR)
British Show Pony Society (443)	Shire Horse Society
British Skewbald & Piebald Association	Shetland Pony Stud Book Society
Equifest	Welsh Pony & Cob Society (AF000030)
Miniature Horse Society	Senior Showing & Dressage Ltd
NCPA (109/23)	UK Ponies & Horses Ltd (23/A18/8313)
Traditional Gypsy Cob Association (23/0106/4/STQ)	

BSPS CHAMPIONSHIPS

This Show is affiliated to the BSPS (443) and all persons entering, competing, showing or otherwise taking part in BSPS classes, whether or not members of the BSPS are subject to the Constitution and Rules of the BSPS, including the disciplinary procedures and shall be deemed to have consented to the jurisdiction of the BSPS. Qualification for the 2023 Summer Championships is as follows: 1st and 2nd placed in classes 61, 63-65, & 68-72, 1st to 3rd placed in classes 59, 66 & 113-119.

BSPS ROGER'S TRUCK SERVICES LTD CHALLENGE

Open Lead Rein, First Ridden and Open Show Ponies, Lead Rein of Hunter Type, SHP, WHP, Cradle Stakes, Nursery Stakes, Intermediate WH and Heritage M&M Lead Rein, First Ridden, Open Ridden and WHP classes. This show is a qualifier for the BSPS Challenge. Animals must qualify for the Challenge by attending any BSPS affiliated Show and competing in the appropriate class. Ponies must not have qualified for the 2023 Horse of the Year Show in the appropriate class.

UK HORSES & PONIES LTD

This Show is a qualifier for the UK Ponies and Horses Spring Classic 2024, to take place at Onley Equestrian Centre in Warwickshire. 1st, 2nd and 3rd placed competitors in the relevant classes will qualify. Competitors are not required to be a member of UKPH to compete in the Spring Classic. Qualification cards are not handed out in the ring; however, results can be verified by the office.

NCPA PONY OF THE YEAR SHOW

This Show is a qualifier for the NCPA Pony of the Year Show 2023. First and second prize-winners in all classes that are not Horse of the Year Show or Royal International Horse Show qualifying classes will qualify.

EQUIFEST SHOWING SHOW

This Show is affiliated to Equifest, taking place at Arena UK, Grantham, Lincolnshire on 2nd to 5th August 2023. The two highest placed exhibitors, not already qualified, in classes 19, 30, 34 – 37, 39 – 41, 50, 52 – 55, 108 – 111, 113, 114, 120, 121, 125 & 127 - 130 will qualify. In order to qualify for Equifest, competitors are requested to download the Equifest qualification card prior to competing at affiliated shows and get it signed by the Judge at the time of qualification. Copies of card are available at: -

https://equifest.org.uk/wp-content/uploads/2022/12/Equifest_2023_Qualification_Card.pdf

WELSH PONY AND COB SOCIETY

Welsh Exhibitors, you will need to provide the WPCS with certain personal information relating to you. Your privacy is extremely important to WPCS, so we want you to know exactly how we will use that personal information. Our full privacy notice setting out detailed information about matters such as what personal information we use, for what purpose we use it, what our legal basis for doing so is and who we share your personal information with, can be viewed on our website <http://wpcs.uk.com/> If you would prefer to see a hard copy of our privacy notice, please ask a member of WPCS staff to provide you with the same.

THE IDHS(GB) £2000 RIDDEN CHALLENGE

This show is a qualifier for the Irish Draught Horse Society (GB) £2,000 Ridden Challenge. The highest placed horse (not already qualified) in classes 20, 21, 22, 23, 24, 25, 26, 30, 37, 38 and 44 that is registered or eligible for registration on the Irish Draught or Irish Draught Sport Horse Register, with a minimum of 25% proven Irish Draught breeding, will qualify for the final of the IDHS (GB) £2,000 Challenge. Horses need not be registered with the Irish Draught Horse Society (GB) to qualify but must be on the IDHS (GB) Registers by the time of the Championship, which will be held at the IDHS (GB) Annual Breed Show on 2nd and 3rd September 2023 at Onley Equestrian Centre, Onley Grounds Farm, Willoughby, Rugby, Warwickshire CV23 8AJ. In the final, the Champion will be awarded £1,000 prize money and a trophy. The Reserve Champion will be awarded £500, and 3rd to 7th inclusive will be awarded £100 each. In addition, the highest placed Purebred Irish Draught will receive a trophy and £100, and the highest placed Sport Horse will receive a trophy and £50. A horse may only qualify for the final once, regardless of the type or number of classes won, placed in, or entered. Qualifiers will be contacted by a member of the IDHS Show Team. Qualifiers are required to complete an online form at www.idhsgb.org.uk to inform the IDHS (GB) that they have qualified for the final.

SUPREME IN-HAND CHAMPIONSHIP

This Championship is a qualifier for the **NCPA Golden Supremes** held in September 2023. The Supreme Champion and Reserve Supreme Champion prize-winners will qualify.

Judging: To be held on **THURSDAY** in Ring 6 on completion of the Mixed Mountain & Moorland classes.

The overall Champion and Reserve prize winners from the following sections are eligible to compete:

- Mixed Mountain & Moorland
 - Shetland
 - Welsh Part-Bred
 - Welsh Mountain Ponies - Section A
 - Welsh Ponies - Section B
 - Welsh Ponies of Cob Type – Section C
 - Welsh Cobs - Section D
-

SENIOR HORSES AND PONIES



THE LONDON INTERNATIONAL HORSE SHOW SSADL HOME PRODUCED DIRECT ROUTE MIXED QUALIFIER 2023

Judges: **Classes 1 – 6** Mrs J Marsden, Lancashire & Mr K Whitehouse-Lowe, Shropshire
Classes 7 & 8 Mrs C Frost, Staffordshire

Judging: To be judged on **WEDNESDAY** at 7.45am in the Main Ring (Section B)

Entry Fee: **Classes 1 – 6** £35 (including £10 SSADL levy)
Classes 7 & 8 £20

Prizes: As per prize money table - see front of schedule

- Class 1** **Pre-Senior.** In-Hand. Pony or Horse. 15-18 years old.
Class 2 **Senior.** In-Hand. Pony or Horse. 19-23 years old.
Class 3 **Senior-Plus.** In-Hand. Pony or Horse. 24 years old and over.
Class 4 **Pre-Senior.** Ridden. Pony or Horse. 15-18 years old.
Class 5 **Senior.** Ridden. Pony or Horse. 19-23 years old.
Class 6 **Senior-Plus.** Ridden. Pony or Horse. 24 years old and over.

Championship: 1st & 2nd prize winners from the above classes are required to go forward to the day championship. The highest placed 2023 SSADL Member/Pony/Horse will claim the LIHS ticket. If the Champion has already qualified, then the qualification will be handed down the line to the next eligible competitor.

Direct Route Qualifiers: Open to members and non-members however, to claim the LIHS Ticket a competitor must already be a 2023 SADDL member. The members must produce their membership cards or a covering letter from the SADDL Show Office to be able to claim the LIHS Ticket. The rider/handler/pony/horse combination must stay the same for the Grand Final, unless under special circumstances, then the Directors will intervene. For a competitor to be eligible to compete at the LIHS Senior Showing Grand Final at Xcell, all ponies/horses must meet the current FEI vaccination regulations.

NOTE – Once a competitor has qualified for the LIHS in the Ridden Section they are not allowed to qualify in the In-Hand Section and vice versa. A competitor can still compete in qualifiers but is not allowed in any Championship. Should this arise the 2nd & 3rd placed will go forward to the day Championship.

SSADL HOME PRODUCED IN-HAND & RIDDEN QUALIFIERS 2023 THE LONDON INTERNATIONAL HORSE SHOW FIRST ROUND SPONSORED BY AGRIA



**MEMBERS OPEN CHALLENGE, MEMBERS MOUNTAIN & MOORLAND CHALLENGE, MEMBERS LEAD
REIN/FIRST RIDDEN CHALLENGE, MEMBERS FOREIGN BREEDS CHALLENGE, SENIOR OF THE YEAR
CHAMPIONSHIP & SUPER STARS CHAMPIONSHIP**

Class 7 **Mixed Age.** In-Hand. Pony or Horse. 15 years and over.
Class 8 **Mixed Age.** Ridden. Pony or Horse. 15 years and over.

Championship: 1st and 2nd placed exhibitors in the Mixed Age classes are eligible.

SSADL Home Produced Members Qualifiers are open to both members and non-members of SSADL – Non-members will have 10 days to join the society on receiving a qualification card.

2023 Qualification System

SSADL members will receive their own qualification card which is to be signed at the time of judging/presentation. It is the members responsibility to ensure the right qualifier is signed for.

1. 1st to 6th in each AGE group will qualify for the **London International Horse Show 2nd round qualifiers**.
2. The 1st to 2nd from each AGE section will qualify for the **SSADL Members Open Challenge** (Lead Rein Ponies are NOT permitted) If a competitor has already qualified the qualification can be passed down no lower than 5th place.
3. The two highest placed Mountain & Moorland ponies within a class will qualify for the **Members Mountain & Moorland Challenge**. (Lead Rein Ponies are NOT permitted)
4. The two highest placed Lead Rein/First Ridden ponies within a class will qualify for the **Members Lead Rein/First Ridden Challenge**.
5. The two highest placed Foreign Breeds animals within a class will qualify for the **Members Foreign Breeds Challenge**.
6. The winner from each class will qualify for the **Senior of the Year Championship**.
7. **SSADL Super Stars Championships**. To be eligible to compete in this championship a competitor must be a member of and have competed in 2 events /classes of a Pony Club or Riding Club. Membership numbers required to be put on qualification card.

Once a member has filled in their qualification card for the relevant classes then said card must be sent to the SSADL office by normal post no later than 30th August 2023. Members should remember to photocopy their card which should NOT be sent by recorded delivery.

Non-member's qualification cards will be handed out in the ring in each section to the two highest placed competitors who are not already members of SSADL. These qualification cards must be returned to the SSADL Head Office within the 10-day period of date of show along with a correctly completed 2023 membership application and full payment. Only then will Members be eligible for the Members Challenge Primary rounds and Challenge Finals to be held at the SSADL National Championship Show on 9th and 10th September 2023 at Onley Grounds, Rugby, Warks.

The following applies in all SSADL classes:

- No spurs – with the exception of Adult Side Saddle Riders.
- No galloping/canter extensions.
- No wearing of face/body jewellery with the exception of a medical earring.
- No foals are permitted in SSADL classes.
- Minimum age of handler in In-Hand classes is 11 years.
- Stallions – either In-Hand or Ridden competitors must be over the age of 16 years.
- Grooms must be 16 years of age and over and correctly dressed.
- Lead Rein competitors will not be required to strip.
- First Ridden ponies will be asked after the initial walk round to come in to the centre of the ring and will only canter in their individual show.
- Competitors cannot enter the ring once the command of trot has been given.
- SADDL age badges must be worn by members. Failure to do so will deem disqualification.
- All stallions must wear the SADDL Stallion Badge
- Competitors cannot enter the ring once the command of trot has been given.
- The rider/handler/pony/horse combination must stay the same whether side saddle or astride from first/second or direct route qualifiers and grand final, unless special circumstances should arise, then it will be left to the discretion of the Directors and Advisory Committee to oversee this rule if required.

ALL COMPETITORS SHOULD ACQUAINT THEMSELVES WITH SSADL RULES BEFORE ENTERING For more in-depth information go to www.seniorshowinganddressage.co.uk

YOUNG HANDLER

JUDGE: Mrs E Payne, Northamptonshire
Judging: To be judged on **THURSDAY** not before 4pm in Ring 6
Entry Fee: £15
Prizes: Prizes in kind will be awarded in this section

Class 9 **Young Handler.** Mare or Gelding, 4 years old and over, not exceeding 148cms, to be exhibited by a handler between 7 and 12 years on the day of the show. This class will be judged on the presentation and competence of the handler and not the animal being shown. Colts and stallions are not eligible. All ponies can only be shown once in this class and must be an appropriate size and age for the ability of the handler. Each young handler must be accompanied to the ring by a parent or responsible adult who should be present for the sole purpose of overseeing and ensuring control. Competitors must wear a safety/kite mark hard hat with a chinstrap.

The Little Rock Equine Vets Ltd SENIOR LOCAL RIDER - THURSDAY

JUDGE: Ms J Callwood, Cheshire
Judging: To be judged on **THURSDAY** not before 3pm in the Ring 4/5
Entry Fee: £15
Prizes: Prizes in kind will be awarded in this section



Class 10 **The Little Rock Equine Vets Ltd Senior Local Rider.** 16 Years of age and over on 1st January in the current year. Open to riders living within a 30-mile radius of the Showground. To be judged 50% on riding ability and 50% turnout.

SPECIAL PRIZES

SPECIAL 1 Little Rock Equine Vets Ltd very kindly offer a sash to the first placed exhibit.
SPECIAL 2 The Staffordshire & Birmingham Agricultural Society offer a cut glass award for the first placed exhibit.

The Little Rock Equine Vets Ltd JUNIOR LOCAL RIDER - WEDNESDAY

JUDGE: Ms N Hudson, East Yorkshire
Judging: To be judged on **WEDNESDAY** at 8.45am in Ring 6
Entry Fee: £15
Prizes: Prizes in kind will be awarded in this section



Class 11 **The Little Rock Equine Vets Ltd Junior Local Rider.** Under 16 Years of age on 1st January in the current year. Open to riders living within a 30-mile radius of the Showground. To be judged 50% on riding ability and 50% turnout.

SPECIAL PRIZES

SPECIAL 3 Little Rock Equine Vets Ltd very kindly offer a sash to the first placed exhibit.
SPECIAL 4 The Staffordshire & Birmingham Agricultural Society offer a cut glass award for the first placed exhibit.
SPECIAL 5 The Staffordshire & Birmingham Agricultural Society offer special prizes to:
a) The best competitor riding off the lead rein aged 10 years or under on 1st January in the current year. All eligible exhibits to enter the ring wearing a white armband.
b) The best Lead Rein competitor.

TRAINING STAKES - WEDNESDAY

JUDGES: Miss K Davis, Buckinghamshire & Mrs C Barker, Cumbria

Judging: To be judged on WEDNESDAY at 8am in Ring 1

Entry Fee: £15

Prizes: Prizes in kind will be awarded in this section

Entries will also be taken at the ringside for a limited period on the day of the show, at £20 per entry, from any competitor already entered in another class. Animals may compete in more than one class in this section.

Competitors will be required to jump a course of fences and then give a short individual show including a change of rein and gallop. Marks will be awarded - Jumping 60 points, Style and Manners while Jumping 20 points, Individual Show and Manners 20 points. Any suitable tack and mane/tail plaiting is optional. **No spurs may be worn.**

Class 12 **Staffordshire County 50cms Training Stakes.** Horse/pony any height. 4 years old and over. Rider any age. Maximum height of fences 50cms.

Class 13 **Staffordshire County 60cms Training Stakes.** Horse/pony any height. 4 years old and over. Rider any age. Maximum height of fences 60cms.

Class 14 **Staffordshire County 75cms Training Stakes.** Horse/pony any height. 4 years old and over. Rider any age. Maximum height of fences 75cms

TRAINING STAKES - THURSDAY

JUDGES: Mrs B Ashby-Jones, Warwickshire & Mrs G Simpson, Derbyshire (Wortley)

Judging: To be judged on THURSDAY at 8am in Ring 1

Entry Fee: £15

Prizes: Prizes in kind will be awarded in this section

Entries will also be taken at the ringside for a limited period on the day of the show, at £20 per entry, from any competitor already entered in another class. Animals may compete in more than one class in this section.

Competitors will be required to jump a course of fences and then give a short individual show including a change of rein and gallop. Marks will be awarded - Jumping 60 points, Style and Manners while Jumping 20 points, Individual Show and Manners 20 points. Any suitable tack and mane/tail plaiting is optional. **No spurs may be worn.**

Class 15 **Staffordshire County 70cms Training Stakes.** Horse/pony any height. 4 years old and over. Rider any age. Maximum height of fences 70cms.

Class 16 **Staffordshire County 80cms Training Stakes.** Horse/pony any height. 4 years old and over. Rider any age. Maximum height of fences 80cms.

Class 17 **Staffordshire County 90cms Training Stakes.** Horse/pony any height. 4 years old and over. Rider any age. Maximum height of fences 90cms.

UNAFFILIATED RIDDEN HORSES

These classes are unaffiliated, and horses/riders do not have to be members of any society to enter.

BSHA Rising Star Associate Series

Class 18 is a qualifier for the BSHA Rising Star Associate Series Final at the BSHA National Championship Show. The highest placed animal of each section type in the class will be eligible to compete in the BSHA Rising Star Associate Final at the BSHA National Championship Show on 7th – 9th September 2023. Open to amateur BSHA members and non-members – please see Rule 7 in 2023 BSHA Rulebook. Qualification is open to horses which have never been placed in the top 9 in any class at a HOYS Final (not including SFAS, but to include the top three placings in the SEIB R2R Final) or never having been placed in the top 9 in any RIHS Open Final at Hickstead. No competitor previously deemed a showing professional / producer may be permitted to qualify. JMB certificates will not be required to compete in these classes. The highest placed of each type will qualify in the following sections: Rising Star Associate Ridden Plaited Show Horse, Rising Star Associate Ridden Hunter, Rising Star Associate Ridden Show Cob and Rising Star Associate Racehorse to Show Horse.

JUDGE: Ms E Robey, Derbyshire

Course Builder: Mr D Cole, Nottinghamshire

Judging: To be judged on **THURSDAY** not before 11.15am in Ring 1

Entry Fee: £20

Prizes: As per prize money table - see front of schedule

Class 18 **Ridden Hunter, Cob, Riding Horse or Racehorse** – Mare or gelding, exceeding 148cms (14.2hh approx.), four years old and over.

Class 19 **Working Hunter** - Mare or gelding, exceeding 148cms (14.2hh approx.), 4 years old and over. Not to have won a total of £400 in Working Hunter classes, or more than 25 BE points or 400 BS points. Height of fences will not exceed 1m (3' 3")

Championship: 1st and 2nd placed exhibitors in classes 17 and 18 are eligible.

ENTRY CLOSING DATES

LIGHT HORSE / HEAVY HORSE / PRIVATE DRIVING

ONLINE ENTRIES close MONDAY 1st MAY

<https://www.staffscountyshowground.co.uk/staffordshire-county-show/schedules-and-entry-forms/horse-and-pony-entry-form/>

Entries MAY re-open for a few days extra if entry numbers allow. These entries will be at an increased fee, exhibitors should note it cannot be guaranteed that all classes will be re-opened

RIDDEN HUNTERS

Incorporating Horse of the Year Show qualifiers

Horse of the Year Show

Classes 21, 22, 23 and 24 are qualifying classes for Horse of the Year Show. The final to be held at Horse of the Year Show, NEC, Birmingham, 4th – 8th October 2023. These classes will be run in accordance with the general rules as set out in the Horse of the Year Show rulebook, a copy of which can be downloaded from www.hoys.co.uk. All data given upon entry of these classes is provided to Grandstand Media and stored on the Grandstand Entries system. For full policy details please visit www.grandstandentries.com. All Riders, Owners and Producers must be Members of the British Show Horse Association, The Showing Register or Sport Horse Breeding GB. Horses must be registered with the British Show Horse Association, The Showing Register or Sport Horse Breeding GB. Riders must be 15 years of age or older. Registration numbers and HOYS ID numbers must be quoted on the Entry Form. In classes 21, 22, 23 and 24 the first prize winner will qualify to compete at the final. If already qualified the second will qualify, if the first and second are already qualified then the third will go forward and so forth to fifth. Qualification will not pass below fifth place. Qualification will be verified by the Horse of the Year Show office.

Horses from class 21 (Small Show Hunter) must not compete in classes 22 -24 (Lightweight, Middleweight, Heavyweight Show Hunter) and vice versa.

Classes 21, 22, 23 and 24 entitle eligible amateur combinations to earn points for the Premier Amateur League, with the opportunity of gaining a wildcard place at HOYS 2023. This is open to current TSR members or those that have signed up to the Premier League 2023. For more information see www.theshowingregister.co.uk.

BSHA Supreme of Season Finals

The highest placed unqualified exhibit will qualify to compete in the BSHA Supreme of Season Finals. The Finals will be held at the BSHA Hunter and National Championship Shows in September 2023.

The IDHS(GB) £2000 Ridden Challenge

This show is a qualifier for the Irish Draught Horse Society (GB) £2,000 Ridden Challenge. Please refer to Qualifiers and Conditions page at front of schedule for full details.

JUDGES:

Classes 20 & 21 **Ride** – Ms S-J Enston, Gloucestershire
 Conformation – Miss K Sears, Shropshire

Classes 22 – 24 **Ride** – Miss K Sears, Shropshire
 Conformation – Mrs L Penrose, Staffordshire

Judging: To be judged on **THURSDAY** commencing at 7.30am in the Main Ring

Entry Fees: **Class 20** **£20**
 Classes 21 - 24 **£41** (including £16 Horse of the Year Show contribution)

Prizes: As per prize money table - see front of schedule

Class 20 **BSHA Novice Hunter.** Mare or gelding, 4 years old and over, exceeding 158cms. Capable of carrying up to 79.5kgs (12 stone 7lbs) for Lightweight, 79.5kg (12 stone 7lbs) and not exceeding 89kgs (14 stone) for Middleweight and over 89kgs (14 stone) for Heavyweight.

Class 21 **Hamilton Tarmac Small Hunter - Horse of the Year Show Qualifier.** Mare or gelding, 4 years old or over, exceeding 148cms (14.2hh approx) but not exceeding 158cms (15.2hh approx).

- Class 22** **Catplant Group of Companies Ltd Open Lightweight Hunter – Horse of the Year Show Qualifier.** Mare or gelding, 4 years old or over, exceeding 158cms, capable of carrying up to 79.5kgs (12 stone 7lbs).
- Class 23** **Catplant Group of Companies Ltd Open Middleweight Hunter – Horse of the Year Show Qualifier.** Mare or gelding, 4 years old or over, exceeding 158cms, capable of carrying 79.5kg (12 stone 7lbs) and not exceeding 89kgs (14 stone).
- Class 24** **Catplant Group of Companies Ltd Open Heavyweight Hunter – Horse of the Year Show Qualifier.** Mare or gelding, 4 years old or over, exceeding 158cms, capable of carrying over 89kgs (14 stone).

Championship: 1st and 2nd placed exhibitors in classes 22 to 24 are eligible.

SPECIAL PRIZES

SPECIAL 6 **The Earl of Shrewsbury and Talbot Cup.** For the best exhibit in the Open Ridden Hunters.

LADIES SHOW HORSE

Mears Ladies Show Horse Championship

Class 25 is a qualifier for the Mears Ladies Show Horse Championship, with a first prize of £200, to be held at the BSHA National Championships. The four highest placed to qualify. Competitors must be a member of BSHA or the SSA or purchase a day ticket from the BSHA office. Riders must be 15 years of age or older.

DAY TICKETS

Non-Members may purchase up to a maximum of 2 Day Tickets per Exhibitor, per Horse per Rider, per season. A Day Ticket will allow entry into Amateur, Home Produced, In-Hand, Novice, Working, Young Rider and Open affiliated classes only but will not allow entry into RIHS or Horse of the Year Show qualifying classes. Horses registered on a Day Ticket do not require a JMB height certificate. Competitors can apply for a Day Ticket by downloading an application form or apply online on the BSHA website.

The IDHS(GB) £2000 Ridden Challenge

This show is a qualifier for the Irish Draught Horse Society (GB) £2,000 Ridden Challenge. Please refer to Qualifiers and Conditions page at front of schedule for full details.

JUDGES **Ride** – Ms S-J Enston, Gloucestershire
Conformation – Mrs L Penrose, Staffordshire

Judging: To be judged on **THURSDAY** not before 11.15am in the Main Ring

Entry Fee: **£20**

Prizes: As per prize money table - see front of schedule

Class 25 **The Mears Ladies Show Horse.** Mare or gelding four years old and over, exceeding 148cms, suitable to carry a side saddle, to be ridden by a lady.

WORKING HUNTER

Horse of the Year Show Qualifier

Horse of the Year Show

Class 26 is a qualifying class for Horse of the Year Show. The final to be held at Horse of the Year Show, NEC, Birmingham, 4th – 8th October 2023. The class will be run in accordance with the general rules as set out in the Horse of the Year Show rulebook, a copy of which can be downloaded from www.hoys.co.uk. All data given upon entry of these classes is provided to Grandstand Media and stored on the Grandstand Entries system. For full policy details please visit www.grandstandentries.com. All Riders, Owners and Producers must be Members of the British Show Horse Association, The Showing Register or Sport Horse Breeding GB. Horses must be registered with the British Show Horse Association, The Showing Register or Sport Horse Breeding GB. Riders must be 15 years of age or older. Registration numbers and HOYS ID numbers must be quoted on the Entry Form. The first prize winner will qualify to compete at the final. If already qualified the second will qualify, if first and second are already qualified then the third will go forward. Qualification will not pass below third place. Qualification will be verified by the Horse of the Year Show office.

This class entitles eligible amateur combinations to earn points for the Premier Amateur League, with the opportunity of gaining a wildcard place at HOYS 2023. This is open to current TSR members or those that have signed up to the Premier League 2023. For more information see www.theshowingregister.co.uk.

BSHA Supreme of Season Finals

The highest placed unqualified exhibit will qualify to compete in the BSHA Supreme of Season Finals. The Finals will be held at the BSHA Hunter and National Championship Shows in September 2023.

The IDHS(GB) £2000 Ridden Challenge

This show is a qualifier for the Irish Draught Horse Society (GB) £2,000 Ridden Challenge. Please refer to Qualifiers and Conditions page at front of schedule for full details.

JUDGES: **Ride** – Ms Emma Robey, Derbyshire

Conformation – Mr N Fuller, Essex

Course Builder: Mr D Cole, Nottinghamshire

Judging To be judged on **THURSDAY** not before 3pm in Ring 1

Entry Fee: **£41** (including £16 Horse of the Year Show Contribution)

Prizes: As per prize money table - see front of schedule

Class 26 **Working Hunter of the Year Championship - Horse of the Year Show Qualifier.**

Mare, gelding or stallion, four years old and over exceeding 148cm (14.2hh approx) to be ridden. Any horse which has qualified as a Grade A Show Jumper or Advanced Event Horse as at the 1st January in the current year is not eligible to compete in working hunter classes. (Competing stallions must have a red, white and blue ribbon displayed in their tail). Fences will not exceed 1.14m (3ft 9ins) in height, there should be a minimum of eight and a maximum of twelve fences. The course will contain a combination and may contain a water tray. This class will be judged in two parts: Part One (Jumping) will be judged first, without a jump-off. All clear rounds and any other horses the judges may require will go forward to the next part. A rider can ride up to two horses in the jumping phase but then must select only one horse to take forward into the ride and conformation section if so required (no change of rider is allowed).

Jumping will be in catalogue order.

Marks must be awarded in the following way:

PHASE I (60 MARKS)

A: Jumping Points 40 Marks

B: Style While Jumping 20 Marks

PHASE II (40 MARKS)

C: Conformation 20 Marks

D: Ride 20 Marks

In the event of equality, the CONFORMATION MARK from Phase II will take precedence, followed by the RIDE MARK, and then the STYLE MARK.

SPECIAL PRIZES

SPECIAL 10 The "Gamekeeper II" Perpetual Challenge Cup. Kindly offered by Miss M Sherrington to the winner of the Open Working Hunter Class.

AMATEUR HOME PRODUCED

Entries in this class are held under the rules of the British Show Horse Association. Owners, Riders and Horses must be registered or have temporary membership with a Day Ticket. Horses registered with the Association must be owned, exhibited, and ridden by current BSHA Members. Riders must be 15 years of age or older. Registration numbers must be quoted on entry form.

DAY TICKETS

Non-Members may purchase up to a maximum of 2 Day Tickets per Exhibitor, per Horse per Rider, per season. A Day Ticket will allow entry into Amateur, Home Produced, In-Hand, Novice, Working, Young Rider and Open affiliated classes only but will not allow entry into RIHS or Horse of the Year Show qualifying classes. Horses registered on a Day Ticket do not require a JMB height certificate. Competitors can apply for a Day Ticket by downloading an application form or apply online on the BSHA website.

BSHA National Championship Show

The 2 highest placed unqualified in the top five will qualify for the final at the BSHA National Championship Show.

JUDGES: Ride – Mr N Fuller, Essex
Conformation – Mrs A Varley, Nottinghamshire

Judging: To be judged on **THURSDAY** not before 9.30am in Ring 4/5

Entry Fee: £20

Prizes: As per prize money table - see front of schedule

Class 30 **Turley & Gill Amateur Home Produced**, Mare or Gelding, four years old and over, exceeding 148cms. Open to horses to be Home-Produced and ridden by an Amateur: please see rule 7 in 2023 BSHA Rulebook for Amateur Home-Produced definition. Horses must be registered as either a Hack, Cob, Maxi Cob or Riding Horse.

HACKS AND RIDING HORSES

Entries in these classes are held under the rules of the British Show Horse Association and Owners, Riders and Horses must be registered. Horses registered with the Association must be owned, exhibited, and ridden by current BSHA Members. Riders must be 15 years of age or older. Registration numbers must be quoted on entry form.

Royal International Horse Show

This is a qualifying Show for the 2023 Royal International Horse Show. The first in each RIHS class will qualify. If already qualified, the second will qualify: if the first and second are already qualified then the third will go forward.

BSHA Supreme of Season Finals

The highest placed unqualified exhibit will qualify to compete in the BSHA Supreme of Season Finals. The Finals will be held at the BSHA Hunter and National Championship Shows in September 2023.

The IDHS(GB) £2000 Ridden Challenge

This show is a qualifier for the Irish Draught Horse Society (GB) £2,000 Ridden Challenge. Please refer to Qualifiers and Conditions page at front of schedule for full details.

JUDGE: **Ride** – Ms S-J Enston, Gloucestershire

Conformation – Ms B Ashby-Jones, Warwickshire

Judging: To be judged on **THURSDAY** not before 1pm in Ring 4/5.

Entry Fees: **£35** (including £10 RIHS levy)

Prizes: As per prize money table - see front of schedule

Class 34 **RIHS Small Hack.** Mare or Gelding. Exceeding 148cms but not exceeding 154cms, 4 years old and over.

Class 35 **RIHS Large Hack.** Mare or Gelding. Exceeding 154cms but not exceeding 160cms, 4 years old and over.

Championship: 1st and 2nd placed exhibitors in the above classes are eligible.

Class 36 **RIHS Small Riding Horse.** Mare or Gelding. Four years old and over. Exceeding 148cms and not exceeding 158cms.

Class 37 **RIHS Large Riding Horse.** Mare or Gelding. Four years old and over. Exceeding 158cms.

Championship: 1st and 2nd placed exhibitors in the above classes are eligible.

SPECIAL PRIZES

SPECIAL 13 **The BSHA** offer Amateur, Young Rider and Novice rosettes in each open class. A Champion rosette is awarded to the Champion Hack and the Champion Riding Horse. These awards will go down the line; there is no limit on how many of these rosettes can be claimed in a year.

Entries in these classes are held under the rules of the British Show Horse Association and Owners, Riders and Horses must be registered. Horses registered with the Association must be owned, exhibited, and ridden by current BSHA Members. Riders must be 15 years of age or older. Registration numbers must be quoted on entry form.

Royal International Horse Show

This is a qualifying Show for the 2023 Royal International Horse Show. The first in each RIHS class will qualify. If already qualified, the second will qualify: if the first and second are already qualified then the third will go forward.

BSHA Supreme of Season Finals

The highest placed unqualified exhibit will qualify to compete in the BSHA Supreme of Season Finals. The Finals will be held at the BSHA Hunter and National Championship Shows in September 2023.

The IDHS(GB) £2000 Ridden Challenge

This show is a qualifier for the Irish Draught Horse Society (GB) £2,000 Ridden Challenge. Please refer to Qualifiers and Conditions page at front of schedule for full details.

JUDGE: **Ride** – Mr N Fuller, Essex
 Conformation – Mrs A Varley, Nottinghamshire

Judging: To be judged on **THURSDAY** not before 11am in Ring 4/5.

Entry Fees: **£35** (including £10 RIHS levy)

Prizes: As per prize money table - see front of schedule

Class 39 **RIHS Lightweight Cob.** Mare or Gelding, 4 years old and over, capable of carrying up to 14 stone, exceeding 148cms and not exceeding 155cms.

Class 40 **RIHS Heavyweight Cob.** Mare or Gelding, 4 years old and over, capable of carrying more than 14 stone, exceeding 148cms and not exceeding 155cms.

Class 41 **RIHS Maxi Cob.** Mare or Gelding exceeding 155cms, 4 years old and over.

Championship: 1st and 2nd placed exhibitors in the above classes are eligible.

SPECIAL 17 **The BSHA** offer Amateur, Young Rider and Novice rosettes in each open class. A Champion rosette is awarded to the Champion Ridden Cob. The awards will go down the line; there is no limit on how many of these rosettes can be claimed in a year.

WORKING SHOW HORSE

Entries in this class are held under the rules of the British Show Horse Association. Owners, Riders and Horses must be registered or have temporary membership with a Day Ticket. Horses registered with the Association must be owned, exhibited, and ridden by current BSHA Members. Riders must be 15 years of age or older. Registration numbers must be quoted on entry form.

DAY TICKETS

Non-Members may purchase up to a maximum of 2 Day Tickets per Exhibitor, per Horse per Rider, per season. A Day Ticket will allow entry into Amateur, Home Produced, In-Hand, Novice, Working, Young Rider and Open affiliated classes only, but will not allow entry into RIHS or Horse of the Year Show qualifying classes. Horses registered on a Day Ticket do not require a JMB height certificate. Competitors can apply for a Day Ticket by downloading an application form or apply online on the BSHA website.

BSHA SEIB Working Show Horse of the Year

This is a qualifying show for the BSHA SEIB Working Show Horse of the Year. The two highest placed horses in the top five, not already qualified in the Open Working Show Horse class will qualify for the Final to be held at the BSHA National Championship Show; no horse placed lower than fifth will qualify. Any Horse which is a Grade B Showjumper, Intermediate Eventer, or above, as at 1st January of the current year, is not eligible to compete in any Working Show Horse class. A Rider may ride up to two horses in the jumping phase but then must select one Horse to take through to the Ride and Conformation phases (if required). No change of Rider is allowed.

The IDHS(GB) £2000 Ridden Challenge

This show is a qualifier for the Irish Draught Horse Society (GB) £2,000 Ridden Challenge. Please refer to Qualifiers and Conditions page at front of schedule for full details.

JUDGES: **Ride** – Ms E Robey, Derbyshire
 Conformation – Mr N Fuller, Essex

Course Builder: Mr D Cole, Nottinghamshire

Judging: To be judged on **THURSDAY** not before 4.15pm in Ring 1.

Entry Fee: **£20**

Prizes: As per prize money table - see front of schedule

Class 42 **Open Working Show Horse.** Open to Hacks, Cobs/Maxi and Riding Horses. Mare or Gelding, four years old and over, exceeding 148cms Fences not to exceed 3'0" in height and 3'0" spread.

ENTRY CLOSING DATES

LIGHT HORSE / HEAVY HORSE / PRIVATE DRIVING

ONLINE ENTRIES close MONDAY 1st MAY

<https://www.staffscountyshowground.co.uk/staffordshire-county-show/schedules-and-entry-forms/horse-and-pony-entry-form/>

Entries MAY re-open for a few days extra if entry numbers allow. These entries will be at an increased fee, exhibitors should note it cannot be guaranteed that all classes will be re-opened.

RETRAINING OF RACEHORSES

All those entering horses and/or participating in this section agree to be bound by the Retraining of Racehorses Rules and Regulations from time to time in force. Competitors must wear a safety/kite mark hard hat with a chinstrap. All entrants to RoR classes must have current RoR competition membership which can be obtained on-line at <https://www.ror.org.uk/registration>

JUDGES: **Ride** – Ms J Callwood, Cheshire
Conformation – Ms K Thorpe, Oxfordshire



Judging: Class 46 to be judged on **THURSDAY** not before 1.30pm in Ring 1.
Class 47 to be judged on **THURSDAY** not before 10.15am in Ring 4/5.

Entry Fee: **£20**

Prizes: As per prize money table - see front of schedule

Class 46 THE TATTERSALLS RoR FORMER RACEHORSE CHALLENGE SHOW SERIES QUALIFIER 2023
Mare or gelding 4 years old or over and of any height. Riders must be 15 years old or over on 1st January 2023. Horses to be ridden in any suitable bridle and should be plaited. All entries must be registered with RoR and HAVE raced in GB. Racing injuries and blemishes ARE IGNORED in this series. The first three go forward to the final at the Jockey Club RoR National Championships, Aintree on 26th August 2023. The judge will not ride. Horses may be stripped for conformation at the discretion of the judge.

The class to be judged **50%** jumping, **20%** style while jumping and performance and **30%** awarded for show, manners and suitability to be retrained.

PHASE 1

Jumping to be judged:

8 rustic jumps – 3' (90cms) to 3'3" (1 metre) with a maximum spread of 95cms

The following points to be deducted at the end of each jumping round:

10 points to be deducted for a knock down.

15 points to be deducted for a refusal.

20 points for second refusal.

Elimination for third refusal or fall or error of course.

PHASE 2

Class returns without boots and is judged for an individual show/conformation. (In some classes, at the judge's discretion, horses might be asked to do a 'show' following their jumping without leaving the ring. This is often the case with a large number in the class)

Each horse to complete an individual show of no longer than 1 ½ minutes. Show to include the following movements:

Walk, trot, canter showing change of leg, extended canter (gallop) halt and stand, walk off on long rein. Total marks out of **30%** for show, manners and suitability to be retrained.

Fences for the final at Aintree can be up to a maximum of 3'6" (1.05m)

In addition to the prize money offered by Staffordshire County Show, RoR offer the following prizes:

Rosettes and Vouchers 1st to 3rd place.

1st £30, 2nd £20, 3rd £10.

Veteran prize (15+) £20 voucher to be redeemed from RoR office and qualification for the Veteran Final at the Jockey Club National Championships at Aintree on 26th August 2023.

Class 47 THE TATTERSALLS RoR OPEN RIDDEN SHOW SERIES QUALIFIER 2023

Thoroughbred mare or gelding, 4 years old or over, any height. Riders must be 15 years or over on 1st January 2023. Horses should be ridden in a snaffle, pelham or simple double bridle with a plain cavasson noseband. Horses should be plaited. The first THREE go forward to the championship at Hickstead on 25th June 2023. All entries must be competition registered with the RoR and include their competition registration number on entry form and HAVE raced in GB.

Please be aware that the Show will split the class on the horse's last run in a race (NH or Flat) or will provide 2 ride judges should the entries exceed 20. Please mark your entry form **CLEARLY** with either 'LAST RUN NH' or 'LAST RUN FLAT'

Racing injuries and blemishes will NOT be ignored in this series.

In addition to the prize money offered by Staffordshire County Show, RoR offer the following prizes:

Rosettes 1- 4th and Vouchers 1st to 3rd place.

1st £40, 2nd £30, 3rd £20.

Veteran prize (15+) £20 voucher to be redeemed from RoR office and qualification for the Veteran Final at the Jockey Club National Championships at Aintree on 26th August 2023.

SHOW HUNTER PONY

These classes are affiliated to the BSPS and run under their rules. Non-members may compete but only owners and rider who are current BSPS members will qualify for the 2023 Summer Championships.

BSPS Binks Family Champion of Champions

The 1st prize winners in classes 50 and 52 will qualify.

JUDGE: Mrs G Simpson, Derbyshire (Wortley)

Judging: To be judged on WEDNESDAY at 8am in Ring 4/5.

Entry Fee: £20

Prizes: As per prize money table - see front of schedule

Class 49 The BSPS Mixed Height Novice Show Hunter Pony. Mare or Gelding. 4 years old or over, not exceeding 153cms. Riders must be the correct age for the height of the animal they ride.

Class 50 The BSPS Mixed Height Open Show Hunter Pony. Mare or Gelding, 4 years old and over, not exceeding 153cms. Riders must be the correct age for the height of the animal they ride.

Class 51 The BSPS Open First Pony of Show Hunter Type. Mare or Gelding, 4 years old and over, not exceeding 122cms. Suitable to be ridden by a rider not to have attained their 10th birthday before 1st January in the current year. (Snaffle bridles only, no cantering is allowed except for individual performances, ponies must leave the ring at the walk or trot)

Class 52 The BSPS Lead Rein Pony of Hunter Type. Mare or Gelding, 4 years old and over, not exceeding 122cms. Suitable to be ridden by a rider not to have attained their 9th birthday before 1st January in the current year.

Mini Championship: 1st and 2nd prize winners in the First Ridden and Lead Rein classes are eligible.

SPECIAL PRIZES

SPECIAL 18 The Tonge Trophy. Very kindly presented by the late Mr & Mrs R E Tonge for winner of the Mixed Height Open Show Hunter Pony class.

UNAFFILIATED RIDDEN PONIES

These classes are unaffiliated, and ponies/riders do not have to be members of any society to enter.

JUDGE: Mrs G Simpson, Derbyshire (Wortley)

Judging: To be judged on **WEDNESDAY** not before 9.15am in Ring 4/5.

Entry Fee: £20

Prizes: As per prize money table - see front of schedule

Class 53 **Open Mixed Height Show/Show Hunter Pony.** Mare or Gelding, 4 years old and over, not exceeding 153cms. Riders 20 years and under on 1st January in the current year. No Lead Rein competitors in this class.

Class 54 **Mixed Breeds Ridden Mountain & Moorland.** Mare or Gelding, 4 years old and over. Open to registered or unregistered ponies. Riders any age. No Lead Rein competitors in this class.

Class 55 **Lead Rein.** Mare or Gelding, 4 years and over. Open to plaited or native type ponies not exceeding 128cms. Riders 9 years and under on 1st January in the current year. Every entrant will receive a rosette.

Class 56 **'Have A Go' First Ridden (Walk & Trot)** Mare or Gelding, 4 years old and over. Open to plaited or native type ponies not exceeding 128cms. Riders 11 years and under on 1st January in the current year. Ponies will only walk and trot in this class. Every entrant will receive a rosette.

FANCY DRESS

JUDGE: Ms N Hudson, East Yorkshire

Judging: To be judged on **WEDNESDAY** not before 3.15pm in Ring 6.

Entry Fee: £15

Class 57 Open to riders of any age and ability. The theme is **'It's all about Disney'** You can be as creative as you like but exhibitors must ensure their pony/horse and handler/rider can cope happily in an environment where there may be lots of large, bright and sometimes noisy costumes. A correctly fitting and fastened riding hat must be worn at all times whilst mounted. Appropriate footwear should also be worn. All children taking part in the Fancy Dress will receive a rosette. Fun prizes will also be awarded to the Judges three favourite fancy dress costumes.

ENTRY CLOSING DATES

LIGHT HORSE / HEAVY HORSE / PRIVATE DRIVING

ONLINE ENTRIES close MONDAY 1st MAY

<https://www.staffscountyshowground.co.uk/staffordshire-county-show/schedules-and-entry-forms/horse-and-pony-entry-form/>

Entries MAY re-open for a few days extra if entry numbers allow. These entries will be at an increased fee, exhibitors should note it cannot be guaranteed that all classes will be re-opened

WORKING HUNTER PONY

These classes are affiliated to the BSPS and run under their rules. Non-members may compete in classes 58, 59, 60 & 62 but only owners and rider who are current BSPS members will qualify for the 2023 Summer Championships. In all WHP classes competitors must wear a body protector in the jumping phase.

RIHS

Classes 61 & 63 – 66 are qualifiers for the Royal International Horse Show. Only one pony qualifies and the highest placed pony (not already qualified) from the first three ponies in these classes will qualify. Only BSPS owned, registered and ridden ponies may compete in these classes. Registration numbers should be stated on the entry form together with the name of the rider.

BSPS Binks Family Champion of Champions

The 1st prize-winners in classes 59 & 61 will qualify.

NCPA Golden Supremes

The Open WHP Championship is a qualifier for the Golden Supremes held in September 2023. The Champion and Reserve Champion prize-winners will qualify.

JUDGES: Mrs S Stockley-Bridges, Lancashire & Mrs C Barker, Cumbria

Course Builder: Mr D Cole, Nottinghamshire

Judging: To be judged on **WEDNESDAY** not before 10.30am in Ring 1.

Entry Fee: **Classes 58 – 60 & 62 £20**
Classes 61 & 63 – 66 £35 (including £10 RIHS levy)

Prizes: As per prize money table - see front of schedule

Class 58 **The BSPS Tiny Tots Stakes.** Mare or Gelding, 4 years old and over, not exceeding 122cms. Suitable to be ridden by a rider not to have attained their 9th birthday before 1st January in the current year. Maximum height and spread for fences 40cms.

Class 59 **The BSPS Cradle Stakes.** Mare or Gelding, 4 years old and over, not exceeding 122cms. Suitable to be ridden by a rider not to have attained their 11th birthday before 1st January in the current year.

Class 60 **BSPS Restricted Nursery Stakes.** Mare or Gelding, 4 years old and over, not exceeding 133cms. Suitable to be ridden by a rider not to have attained their 12th birthday before 1st January in the current year. Ponies placed 1st to 8th at RIHS in 2021, 2022 or 2023 are not eligible to compete in this class.

Class 61 **The BSPS RIHS Open Nursery Stakes.** Mare or Gelding, 4 years old and over, not exceeding 133cms. Suitable to be ridden by a rider not to have attained their 12th birthday before 1st January in the current year.

Open Mini Championship: 1st and 2nd prize winners in the Cradle Stakes and Open Nursery Stakes classes are eligible.

Class 62 **The BSPS Mixed Height Novice WHP / Intermediate WH**, Mare or Gelding, 4 years old or over, not exceeding 158cms. Riders must jump in their correct height section and be the correct age for the height of the pony they ride. Riders may ride more than one pony providing the animals are of a different height section. (see BSPS Rule 37) This class will be split if there are more than 8 entries in each height section.

HEIGHT SECTION MUST BE STATED ON ENTRY FORM

- **Class 62A - 133cms**
- **Class 62B - 143cms**
- **Class 62C - 153cms**
- **Class 62D – Intermediate**

Class 63 **The BSPS RIHS Open WHP** Mare or Gelding, 4 years old and over, not exceeding 133cms. Suitable to be ridden by a rider not to have attained their 14th birthday before 1st January in the current year.

Class 64 **The BSPS RIHS Open WHP** Mare or Gelding, 4 years old and over, exceeding 133cms and not exceeding 143cms. Suitable to be ridden by a rider not to have attained their 17th birthday before 1st January in the current year.

Class 65 **The BSPS RIHS Open WHP** Mare or Gelding, 4 years old and over, exceeding 143cms and not exceeding 153cms. Suitable to be ridden by a rider not to have attained their 20th birthday before 1st January in the current year.

Class 66 **The BSPS RIHS Open Intermediate WH** Mare or Gelding, 4 years old and over, exceeding 148cms and not exceeding 158cms. Suitable to be ridden by a rider not to have attained their 25th birthday before 1st January in the current year.

Open Championship: 1st and 2nd prize winners in the Open WHP classes are eligible.

SPECIAL PRIZES

SPECIAL 20 **The Roos Feeds Challenge Trophy.** Very kindly presented by Roos Feeds Ltd to the Champion Open Working Hunter Pony.

SHOW PONIES

These classes are affiliated to the BSPS and run under their rules. Non-members may compete in class 67 but only owners and rider who are current BSPS members will qualify for the 2023 Summer Championships.

RIHS

Classes 68 – 72 are qualifiers for the Royal International Horse Show. Only one pony qualifies and the highest placed pony (not already qualified) from the first three ponies in these classes will qualify. Only BSPS owned, registered, and ridden ponies may compete in these classes. Registration numbers should be stated on the entry form together with the name of the rider.

BSPS Binks Family Champion of Champions

The 1st prize-winners in classes 68 - 72 will qualify.

The ‘Gribbin Family’ Supreme Ridden Pony Championship

The Final to be held at the North of England Summer Show on 5th August 2023. Kindly sponsored by The Gribbin Family. Prize Money (at the Final) 1st - £1000, 2nd - £400 3rd - £100, 4th - £50, 5th - £25, 6th - £25, 7th - £25, 8th - £25. Sashes to the Champion and Reserve Rosettes to all other prize winners and finalists. The Open Show Pony Champion will qualify. If the Champion has already qualified, then the Reserve Champion will go forward. Only the Champion or Reserve Champion will qualify. Exhibitors who qualify for the final will be sent details directly from: The Secretary, North of England Summer Show, Blue Slate Stables, Showley Road, Clayton-le-Dale, Lancs, BB1 9DP. www.northofenglandshows.co.uk

JUDGE: Miss K Davis, Buckinghamshire

Judging: To be judged on **WEDNESDAY** not before 3pm in Ring 4/5

Entry Fee: **Class 67** £20
Classes 68 – 72 £35 (including £10 RIHS levy)

Prizes: As per prize money table - see front of schedule

Class 67 **The BSPS Mixed Height Novice Show Pony**, Mare or Gelding, 4 years old or over, not exceeding 148cms. Riders must be the correct age for the height of pony they ride.

Class 68 **The BSPS RIHS Open Show Pony**, Mare or Gelding, 4 years old or over, exceeding 138cms and not exceeding 148cms. Suitable to be ridden by a rider not to have attained their 17th birthday before 1st January in the current year.

Class 69 **The BSPS RIHS Open Show Pony**, Mare or Gelding, 4 years old or over, exceeding 128cms and not exceeding 138cms. Suitable to be ridden by a rider not to have attained their 15th birthday before 1st January in the current year.

Class 70 **The BSPS RIHS Open Show Pony**, Mare or Gelding, 4 years old or over, not exceeding 128cms. Suitable to be ridden by a rider not to have attained their 13th birthday before 1st January in the current year.

Open Championship: 1st and 2nd prize winners in the Open Show Pony classes are eligible.

Class 71 **The BSPS RIHS First Ridden Pony**, Mare or Gelding, 4 years old and over, not exceeding 122cms. Suitable to be ridden by a rider not to have attained their 10th birthday before 1st January in the current year. Every entrant in this class will receive a rosette.

Class 72 **The BSPS RIHS Leading Rein Pony**, Mare or Gelding, 4 years old and over, not exceeding 122cms. Suitable to be ridden by a rider not to have attained their 8th birthday before 1st January in the current year. Every entrant in this class will receive a rosette.

Mini Championship: 1st & 2nd prize winners in the Leading Rein and First Ridden classes are eligible.

SPECIAL PRIZES

SPECIAL 23 **The Cavalier Challenge Cup.** Kindly presented by Mr & Mrs Skipper for the winner of the Leading Rein class.

SPECIAL 24 **The Bates and Hunt Perpetual Challenge Cup.** Presented to the Champion Pony in the Open 128cms, 138cms and 148cms Show Pony classes.

WELSH PART-BREDS

WPCS Bronze Status

This Show is affiliated to the Welsh Pony and Cob Society – affiliation no. AF0000030. Animals must be entered correctly in line with the rules detailed in the WPCS Judging and Showing Handbook which can be found on the Society website www.wpcs.uk.com or requested from the WPCS Office. Failure to comply with the rules may result in the withholding of awards.

JUDGE: Mrs S Bull, Gwynedd (Ffynnonbach)
Judging: To be judged on **THURSDAY** not before 9.30am in Ring 6.

Entry Fee: £20
Prizes: As per prize money table - see front of schedule

Class 73 Yearling, Colt, Filly or Gelding.
Class 74 Colt, Filly or Gelding, 2 years old
Class 75 Colt, Filly or Gelding, 3 years old
Class 76 Mare or Gelding, 4 years and over, with or without foal at foot
Class 77 Stallion, 4 years old and over (must be in possession of a WPCS stallion licence or equivalent)

In-Hand Supreme Championship

The Champion and Reserve prize-winners qualify for the **Staffordshire County Supreme In-Hand Championship** to be held on Thursday in Ring 6 after the Mixed Mountain & Moorland classes (see full details at front of schedule)

SPECIAL PRIZES

SPECIAL 25 The Staffordshire & Birmingham Agricultural Society offer £10 for the best foal shown in Class 76.
SPECIAL 25A The WPCS offers a bronze medal and a rosette for the best Welsh Part-Bred in the above classes (in accordance with WPCS rules). First and second prize winners eligible to compete.

WELSH MOUNTAIN PONIES - SECTION A

JUDGE: Mrs S Bull, Gwynedd (Ffynnonbach)
Judging: To be judged on **THURSDAY** following the Welsh Part-Bred classes in Ring 6.

Entry Fees: Classes 78 – 83 & 85: £20 Class 84 (Foal): £15
Prizes: As per prize money table - see front of schedule

Class 78 Yearling, Colt.
Class 79 Yearling, Filly or Gelding.
Class 80 Colt, 2 or 3 years old.
Class 81 Filly or Gelding, 2 or 3 years old.
Class 82 Novice Mare, 4 years old and over, with or without foal at foot. (A novice is a pony that has not won a first prize as a Brood/Barren Mare up to and including the closing date of entry).
Class 83 Gelding or Mare, 4 years old and over, with or without foal at foot. (Mares entered in the Novice class may not enter this class).
Class 84 Foal, produce of a Mare entered in the above two classes. The foal must be eligible for registration in Section A of the Stud Book.
Class 85 Stallion, 4 years old and over (must be in possession of a WPCS stallion licence or equivalent)

In-Hand Supreme Championship

The Champion and Reserve prize-winners qualify for the **Staffordshire County Supreme In-Hand Championship** to be held on Thursday in Ring 6 after the Mixed Mountain & Moorland classes (see full details at front of schedule)

SPECIAL PRIZES

- SPECIAL 26** **The Randan Trophy.** Presented by the late Mr and Mrs Ifor Williams for the Champion Welsh Mountain Pony.
- SPECIAL 27** **The WPCS** offers a bronze medal and a rosette for the best Welsh Mountain Pony in the Section A classes (in accordance with WPCS rules). First and second prize winners eligible to compete.
- SPECIAL 28** **The Mr M I Smith Perpetual Challenge Cup** for the best Welsh Mountain Colt yearling, 2 or 3 years old, exhibited in the previous classes.

WELSH PONIES - SECTION B

JUDGE: Mrs E Payne, Northamptonshire (Slade)
Judging: To be judged on **THURSDAY** not before 11.45am in Ring 6.

Entry Fee: £20
Prizes: As per prize money table - see front of schedule

- Class 86** Yearling, Colt, Filly or Gelding.
Class 87 Colt, Filly or Gelding, 2 years old
Class 88 Colt, Filly or Gelding, 3 years old
Class 89 Gelding or Mare, 4 years old and over, with or without foal at foot.
Class 90 Stallion, 4 years old and over. (must be in possession of a WPCS stallion licence or equivalent)

In-Hand Supreme Championship

The Champion and Reserve prize-winners qualify for the **Staffordshire County Supreme In-Hand Championship** to be held on Thursday in Ring 6 after the Mixed Mountain & Moorland classes (see full details at front of schedule)

SPECIAL PRIZES

- SPECIAL 30** **The Staffordshire & Birmingham Agricultural Society** offer a cut glass award for the Champion Section B Pony.
- SPECIAL 31** **The WPCS** offers a bronze medal and rosette for the best Welsh Pony in the Section B classes (in accordance with WPCS rules). First and second prize winners eligible to compete.
- SPECIAL 32** **The Staffordshire & Birmingham Agricultural Society** offer £10 for the best foal shown in Class 89.

WELSH PONIES OF COB TYPE - SECTION C

JUDGE: Mr D Prater, Buckinghamshire (Rhencullen)
Judging: To be judged on **THURSDAY** following the Welsh Section B classes in Ring 6.
Entry Fee: £20
Prizes: As per prize money table - see front of schedule

Class 91 Yearling, Colt, Filly or Gelding.
Class 92 Colt, Filly or Gelding, 2 years old
Class 93 Colt, Filly or Gelding, 3 years old
Class 94 Gelding or Mare, 4 years old and over, with or without foal at foot.
Class 95 Stallion, 4 years old and over. (must be in possession of a WPCS stallion licence or equivalent)

In-Hand Supreme Championship

The Champion and Reserve prize-winners qualify for the **Staffordshire County Supreme In-Hand Championship** to be held on Thursday in Ring 6 after the Mixed Mountain & Moorland classes (see full details at front of schedule)

SPECIAL PRIZES

SPECIAL 34 The **Staffordshire & Birmingham Agricultural Society** offer a cut glass award for the Champion Section C Pony.
SPECIAL 35 The **WPCS** offers a bronze medal and a rosette for the best Welsh Pony of Cob Type in the Section C classes (in accordance with WPCS rules). First and second prize winners eligible to compete.
SPECIAL 36 The **Staffordshire & Birmingham Agricultural Society** offer £10 for the best foal shown in Class 94.

WELSH COBS - SECTION D

JUDGE: Mr D Prater, Buckinghamshire (Rhencullen)
Judging: To be judged on **THURSDAY** not before 1.45pm in Ring 6.
Entry Fee: £20
Prizes: As per prize money table - see front of schedule

Class 96 Yearling, Colt, Filly or Gelding.
Class 97 Colt, Filly or Gelding, 2 years old.
Class 98 Colt, Filly or Gelding, 3 years old
Class 99 Gelding or Mare, 4 years old or over, with or without foal at foot.
Class 100 Stallion, 4 years old or over (must be in possession of a WPCS stallion licence or equivalent)

In-Hand Supreme Championship

The Champion and Reserve prize-winners qualify for the **Staffordshire County Supreme In-Hand Championship** to be held on Thursday in Ring 6 after the Mixed Mountain & Moorland classes (see full details at front of schedule)

SPECIAL PRIZES

SPECIAL 37 The **WPCS** offers a bronze medal and a rosette for the best Welsh Cob in the Section D classes (in accordance with WPCS rules). First and second prize winners eligible to compete.
SPECIAL 38 The **Staffordshire & Birmingham Agricultural Society** offer a rosette and £10 for the best foal shown in class 99.
SPECIAL 39 The **Staffordshire and Birmingham Agricultural Society** offer a cut glass award to the Champion Welsh Cob.

SHETLAND PONIES

Classes are confined to Shetland Pony Stud Book Society registered ponies. Ponies must be named on the entry form and in the catalogue. Society rosettes shall only be given to ponies registered with the Society or to foals eligible for registration.

Three-year-old fillies with foals at foot may not be shown. All foals must be a minimum of three weeks old on the day of the Show.

In order to enter a stallion class at an affiliated show, entire males aged 4 years old and over must have an "S" number and have been successfully through either the SPS-BS stallion assessment prior to 2006 or the current SPSBS voluntary veterinary examination. Ridden stallions must display a stallion bridle badge. In-hand entire males 2 years and over are advised to display a stallion bridle badge.

There must be no colts or entire males in Young Handlers classes. Children under 14 years old may not show colts (excluding foals) or entire males in In-hand classes. Children under 12 years old on the day of the show may not show entire males in ridden classes. In the interests of safety, hard hats must be worn by all handlers aged 14 years or under in In-hand classes. Exhibitors should not kneel but remain standing while in the ring. Hard hats must be worn by all exhibitors, irrespective of age, in ridden classes. Ridden and driven ponies must be 4 years old or over.

JUDGE: Mrs E Payne, Northamptonshire (Slades)
Judging: To be judged on **THURSDAY** commencing at 8am in Ring 6.

Entry Fee: £20
Prizes: As per prize money table - see front of schedule

- Class 102** Stallion or Gelding, 4 years old and over.
Class 103 Mare, 4 years old and over.
Class 104 Colt, Filly or Gelding, 2 or 3 years old.
Class 105 Yearling, Colt, Filly or Gelding.
Class 106 Small Pony Yearling, 2 or 3 years old. Colt, Filly or Gelding and not to mature at over 34" high. Ponies entered in this class are not eligible to enter in classes 102 - 105.
Class 107 Small Pony Stallion, Mare or Gelding, 4 years old and over and not to exceed 34" high. Ponies entered in this class are not eligible to enter in classes 102 - 105.

In-Hand Supreme Championship

The overall Champion and Reserve prize-winners qualify for the **Staffordshire County Supreme Mountain and Moorland In-Hand Championship** to be held on Thursday in Ring 6 after the Mixed Mountain & Moorland classes (see full details at front of schedule)

SPECIAL PRIZES

- SPECIAL 41** The Shetland Pony Stud Book Society offers a Young Handler rosette for the best young handler in the Shetland Pony classes.
- SPECIAL 42** a) The Staffordshire and Birmingham Agricultural Society and The Shetland Pony Stud Book Society offer their Champion and Reserve Champion rosettes in the overall section championship.
b) The Mrs D M Billings Perpetual Challenge Cup for the best Shetland Pony.
- SPECIAL 43** The Shetland Pony Stud Book Society offers a Senior Champion and Reserve Senior Champion rosette for the exhibit four years of age and over.
- SPECIAL 44** The Shetland Pony Stud Book Society offers a Junior Champion rosette and a Reserve Junior Champion rosette for the best exhibit three years of age and under.

- SPECIAL 45** **The Shetland Pony Stud Book Society** offers a Miniature Champion rosette and a Reserve Miniature Champion rosette for the best exhibit in the Small Pony classes.
- SPECIAL 46** **The Shetland Pony Stud Book Society** offers a Best Gelding rosette.
- SPECIAL 47** **The Silverhill Perpetual Shield** for the best Coloured Pony.
- SPECIAL 48** a) **The Staffordshire & Birmingham Agricultural Society** offers rosettes to the 1st, 2nd and 3rd placed foals.
b) **The Shetland Pony Stud Book Society** offers a rosette for the best Foal.
- SPECIAL 49** **The NCPA** offers a Star Rosette in class 102. Exhibitors must enter the ring wearing their NCPA badge and present their current year's NCPA membership card.

MIXED MOUNTAIN AND MOORLAND IN-HAND

These classes will be judged according to the rules and regulations of UK Horses & Ponies Ltd.

JUDGE: Mrs G Simpson, Derbyshire (Wortley)
Judging: To be judged on **THURSDAY** not before 3pm in Ring 6.

Entry Fee: £20
Prizes: As per prize money table - see front of schedule

Class 108 **UK Ponies & Horses Large Breeds.** Stallion, Mare or Gelding. 4 years old and over. Registered in their approved Pure Breed Society Stud Books of Connemara, Dales, Fell, Highland, New Forest and Welsh Section C or D.

Class 109 **UK Ponies & Horses Large Breeds.** Colt, Filly or Gelding, 1, 2 or 3 year old. Registered in their approved Pure Breed Society Stud Books of Connemara, Dales, Fell, Highland, New Forest and Welsh Section C or D.

Class 110 **UK Ponies & Horses Small Breeds.** Stallion, Mare or Gelding. 4 years old and over. Registered in their approved Pure Breed Society Stud Books of Dartmoor, Exmoor, Shetland and Welsh Section A or B.

Class 111 **UK Ponies & Horses Small Breeds.** Colt, Filly or Gelding, 1, 2 or 3 year old. Registered in their approved Pure Breed Society Stud Books of Dartmoor, Exmoor, Shetland and Welsh Section A or B.

In-Hand Supreme Championship

The Champion and Reserve prize-winners qualify for the **Staffordshire County Supreme Mountain and Moorland In-Hand Championship** to be held on Thursday in Ring 6 after the Mixed Mountain & Moorland classes (see full details at front of schedule)

HERITAGE RIDDEN MOUNTAIN AND MOORLAND

These classes are affiliated to the BSPS and run under their rules. Only BSPS owned, registered and ridden ponies may compete in these classes. Registration numbers should be stated on the entry form together with the name of the rider.

RIHS

Classes 113 - 119 are qualifiers for the Royal International Horse Show. Only one pony qualifies and the highest placed pony (not already qualified) from the first three ponies in these classes will qualify.

BSPS Binks Family Champion of Champions

The first prize-winners from classes 113 - 119 will qualify.

The 'Andrews Family' Supreme Ridden Mountain & Moorland Championship

The Final to be held at the North of England Summer Show on 6th August 2023. Kindly sponsored by The Andrews Family. Prize Money (at the Final) 1st - £1000, 2nd - £400 3rd - £100, 4th - £50, 5th - £25, 6th - £25, 7th - £25, 8th - £25. Sashes to the Champion and Reserve. Rosettes to all other prize winners and finalists. The Champion Open Ridden M & M will qualify. If the Champion has already qualified, then the Reserve Champion will go forward. Only the Champion or Reserve Champion will qualify. Exhibitors who qualify for the final will be sent details directly from: The Secretary, North of England Summer Show, Blue Slate Stables, Showley Road, Clayton-le-Dale, Lancs, BB1 9DP

JUDGES:	Class 112	Miss H Reynolds, Cheshire (Reyncroft)
	Classes 113 – 119	Mr R Owens, Warwickshire

Judging: Class 112 to be judged on **WEDNESDAY** at 7.30am the Main Ring.
Classes 113 – 119 to be judged on **WEDNESDAY** not before 11.15am in Ring 4/5

Entry Fee: Class 112 **£20**
Classes 113 to 119 **£35** (including £10 RIHS levy)

Class 112 **The BSPS Heritage Mountain and Moorland Novice Ridden Mixed Breeds.** Registered Pure Bred Ponies 4 years old or over. Riders any age.

Class 113 **The BSPS Heritage Mountain and Moorland (RIHS) Open Lead Rein.** Mare or Gelding, 4 years old or over, not exceeding 122cms. Suitable to be ridden by a rider not to have attained their 9th birthday before 1st January in the current year.

Class 114 **The BSPS Heritage Mountain and Moorland (RIHS) Open First Ridden.** Mare or Gelding, 4 years old or over, not exceeding 128cms. Suitable to be ridden by a rider not to have attained their 12th birthday before 1st January in the current year.

Mini Championship: First & second prize winners in the Lead Rein and First Ridden classes eligible.

Class 115 **The BSPS Heritage Mountain and Moorland (RIHS) Open Ridden.** Registered Pure Bred Dartmoor, Exmoor and Shetland Ponies. 4 years old or over. Riders any age.

Class 116 **The BSPS Heritage Mountain and Moorland (RIHS) Open Ridden.** Registered Pure Bred Welsh Section A and B Ponies. 4 years old or over. Riders any age.

Class 117 **The BSPS Heritage Mountain and Moorland (RIHS) Open Ridden.** Registered Pure Bred Welsh Section C and D Ponies. 4 years old or over. Riders any age.

Class 118 **The BSPS Heritage Mountain and Moorland (RIHS) Open Ridden.** Registered Pure Bred New Forest and Connemara Ponies. 4 years old or over. Riders any age.

Class 119 **The BSPS Heritage Mountain and Moorland (RIHS) Open Ridden.** Registered Pure Bred Fells, Highlands and Dales. Ponies 4 years old or over. Riders any age.

Championship: First and second prize winners in the Open Ridden classes are eligible

YOUNG RIDERS AND AMATEUR RIDER MOUNTAIN & MOORLAND

To be judged according to the rules and regulations of UK Ponies & Horses Ltd. Owners must be Adult / Life Members, riders must be current UK Ponies & Horses Ltd Annual Members and the ponies currently registered with UK Ponies & Horses Ltd before the time of entry in order to compete in these classes.

The highest placed exhibit not already qualified within the first five will qualify for the UK Ponies & Horses Ltd RIHS Young Riders M&M Ridden or Amateur Riders M&M Finals at the Royal International Horse Show, Hickstead in July 2023.

JUDGE: Miss H Reynolds, Cheshire (Reyncroft)

Judging: To be judged on **WEDNESDAY** not before 8.15am in the Main Ring Section A (following Heritage Novice class)

Entry Fee: £35 (including £10 RIHS levy)

Prizes: As per prize money table - see front of schedule

Class 120 **UK Ponies & Horses Ltd RIHS M&M Small Breeds** – Mare or gelding 4 years old and over. Registered in their approved Pure Breed Society stud books of Dartmoor, Exmoor, Shetland, Welsh Section A or B. Riders not to have attained their 14th birthday before 1st January in the current year.

Class 121 **UK Ponies & Horses Ltd RIHS M&M Large Breeds** – Mare or gelding 4 years old and over. Registered in their approved Pure Breed Society stud books of Connemara, Dales, Fell, Highland, New Forest, Welsh Section C or D. Riders not to have attained their 18th birthday before 1st January in the current year.

Class 122 **UK Ponies & Horses Ltd RIHS Intermediate M&M** – Stallion, mare or gelding 4 years old and over. Registered in their approved Pure Breed Society stud books of Connemara, Dales, Dartmoor, Exmoor, Fell, Highland, New Forest, Shetland, Welsh Section A, B, C or D. Rider not to have attained their 25th birthday before 1st January in the current year (see Rule 7 of the current UK Ponies & Horses Ltd Rule Book)

Championship: Only 1st and 2nd prize winners from the Large Breeds, Small Breeds and Intermediate classes are eligible for the UK Ponies & Horses Ltd Championship.

Class 123 **UK Ponies & Horses Ltd RIHS Amateur Rider Ridden M&M** – Mountain and Moorland ridden stallion, mare or gelding 4 years old and over. Registered in their approved Pure Breed Society stud books of Connemara, Dales, Dartmoor, Exmoor, Fell, Highland, New Forest, Shetland, Welsh Section A, B, C or D. Rider any age.

HERITAGE MOUNTAIN AND MOORLAND WHP

These classes are affiliated to the BSPS and run under their rules. Non-members may compete but only owners and rider who are current BSPS members will qualify for the 2023 Summer Championships. Competitors must wear a body protector in the jumping phase.

The BSPS Binks Family Champion of Champions

The first prize-winner from class 125 will qualify at the BSPS Summer Championship Show.

NCPA Golden Supremes

Class 125 is a qualifier for the Golden Supremes held in September 2023. The winner of class 125 will qualify.

JUDGES: **Jumping** - Mrs J James, Staffordshire (Chasecroft / Stanmar)
 Conformation - Mrs G Simpson, Derbyshire (Wortley)

Course Builder: Mr D Cole, Nottinghamshire

Judging: To be judged on **WEDNESDAY** not before 2pm in Ring 1.

Entry Fee: **£20**

Prizes: As per prize money table - see front of schedule

Class 124 **The BSPS Heritage Mountain and Moorland Novice Mixed Height WHP** Registered pure bred ponies four years old or over. Riders any age. Ponies must jump in their correct height section. Riders may ride more than one pony providing the animals are of a different height section. This class will be split if there are more than 7 entries in each height section. **HEIGHT SECTION MUST BE STATED ON ENTRY FORM**

- **Class 124A - 122cms**
- **Class 124B - 133cms**
- **Class 124C - 143cms**
- **Class 124D – Exc. 143cms**

Class 125 **The BSPS Heritage Mountain and Moorland Open WHP - Mixed Height** Registered pure bred ponies four years old or over. Riders any age. Ponies must jump in their correct height section. Riders may ride more than one pony providing the animals are of a different height section. This class will be split if there are more than 7 entries in each height section. **HEIGHT SECTION MUST BE STATED ON ENTRY FORM**

- **Class 125A - 122cms**
- **Class 125B - 133cms**
- **Class 125C - 143cms**
- **Class 125D – Exc. 143cms**

SPECIAL PRIZES

SPECIAL 51 **The NCPA** offers a Star Rosette in class 124. Exhibitors must enter the ring wearing their NCPA badge and present their current year's NCPA membership card.

SKEWBALD AND PIEBALD

British Skewbald and Piebald Association classes are open to skewbald and piebald horses/ponies only.

Classes 127 and 128 are affiliated to the British Skewbald and Piebald Association and are qualifiers for the Royal International Horse Show, Hickstead on Tuesday 25th July 2023. Classes will be judged under BSPA rules which can be downloaded from www.bsponline.com. All horses/ponies must be registered and all owners and riders BSPA members prior to the show. Rider age taken from 1st January. Membership and qualification cards must be carried in the ring by competitors and produced as required for inspection or signature. Failure to do so will mean disqualification. Spurs may not be worn in any pony class. Ponies 153cm or under (Shetlands exempt) must possess a current JMB height certificate. Competitors qualifying at this show for the Royal International Horse Show on 25th to 31st July 2023 must submit their entries ONLINE at <http://www.hickstead.co.uk/entries-results-schooling/longines-royal-international-horse-show/> Schedules and entry forms will be available to download in April 2023. Online entries will be open on 2nd May and will close on 5th June 2023.

All stallions must be graded and licensed by BSPA for 2023 and wear BSPA Stallion ID Disc. No rider under 14 may exhibit a stallion in any class. No competitor / owner / horse may compete in these classes or enter the ring without current 2023 membership of BSPA, and a RIHS qualification card. **Memberships/horse registrations must be in place before you enter classes.** Qualification for classes 127 and 128: 1st place and the next unqualified competitor standing 2nd or 3rd qualify from each class. No competitor may qualify from lower than 3rd place. BSPA Office: 01354 638226; email: bspashows@gmail.com.

Classes 129 and 130 are affiliated to the British Skewbald & Piebald Association and are qualifiers for the World Championships of Colour National Championship Show 2023. These BSPA classes are open to members and non-members, however only members will qualify for the World Championships of Colour Show. All classes will be judged within the rules and criteria of the BSPA. Copies of the Rule book and Membership / Horse Registration / Overstamping forms can be obtained from the Show Office: 01354 638226 or may be downloaded from: www.bsponline.com. All stallions 4 years old and over must be graded, licensed and registered with the BSPA in order to compete (bridle discs to be worn) In order to qualify, all owners / handlers / riders must be members of the BSPA, and all Horses / Ponies registered with the BSPA prior to the Show. BSPA qualification cards must be produced in the ring and signed by the Judge, otherwise qualification is invalid. Qualification for classes 129 and 130: 1st – 3rd in each class or 1st – 4th for classes with 12 or more entries.

The highest placed Amateur and highest placed Junior in each class (must be BSPA members) will qualify for the Amateur and Junior Supreme Championship Finals to be held at the BSPA World of Colour Championship Show 2023. Cards to be shown and qualification card signed. All Champion and Reserve Champion winners qualify for the BSPA Star Championship at WCC.

JUDGES:

Classes 127 - 129	Ride – Mr N Fuller, Essex
	Conformation – Mrs S Dinsdale, West Yorkshire
Class 130	Mrs S Dinsdale, West Yorkshire

Judging: To be judged on **THURSDAY** at 7.30am in Ring 4/5.

Entry Fees: **Classes 127 & 128** £35 (including £10 RIHS Levy)
Classes 129 & 130 £20

Prizes: As per prize money table - see front of schedule

- Class 127** **BSPA RIHS Ridden Ponies not exceeding 153cms.** Any type. No spurs to be worn. Judge will not ride. Display required. No leading reins permitted.
- Class 128** **BSPA RIHS Ridden Horses exceeding 153cms.** Any type. Judge will ride.
- Class 129** **BSPA World Championship of Colour Open Ridden Qualifier. Horses and ponies combined.** Open to members and non-members of BSPA. Any type, sex or colour. Rider any age. Judge will not ride any exhibit. No spurs to be worn. Display required.
- Ridden Championship:** 1st and 2nd placed exhibitors in the Ridden classes are eligible.
- Class 130** **BSPA World Championship of Colour Open In-Hand Qualifier for Skewbald and Piebald Horses and Ponies.** Any height, type, age, sex or colour.

TRADITIONAL GYPSY COBS

To be run under TGCA rules. All classes are open to traditional gypsy cobs, which are of any colour and meet the TGCA breed standard. No known breeding is required to enter these classes.

Exhibitors do not need to be members of TGCA to compete and horses do not need to be TGCA registered (with the exception of stallions), but exhibitors are required to be TGCA members to qualify for the TGCA Quest for a Star Championship and the horse must be TGCA registered. Stallions must be four years old and over, TGCA registered and have passed TGCA evaluations to enter. Stallions & Colts over the age of two years must be shown in a stallion bridle with metal bit and chain lead as per the current TGCA rulebook. Stallions must wear a TGCA stallion bridle disc.

TOYS Best of Breed Final - These classes are qualifiers for the Best of Breed Finals at the TGCA National Breed Championship Show 'TOYS'. In the Youngstock class the top three horses will qualify for the TOYS Best of Breed finals. In the Senior class the top three horses under 148cm and the top three horses 148cm and above will qualify for the TOYS Best of Breed finals. Existing TGCA members who qualify must present their qualification card to the judge in the ring but must have already filled in the name and registration number of the cob. Non-members who qualify will receive a qualification card in the ring and have 21 days to join and register with the TGCA to validate qualification.

TGCA Quest for a Star Championship - Exhibitors must be members of TGCA and horses registered with TGCA. The top three horses in both the Youngstock and Senior classes will go forward to the Championship (to be held after the Ridden class). Only current TGCA members and horses/ponies that are registered with TGCA can exhibit in this Championship, if an exhibit already has their Quest for a Star qualification, then they should stand aside to allow members who have not qualified to participate. Membership card and Members Qualification card (specific to that exhibit) must be presented upon entry into the ring. Champion and Reserve will qualify for the Ultimate Star Championship at TOYS.

- JUDGE:** Mrs S Dinsdale, West Yorkshire
Judging: To be judged on **THURSDAY** not before 3.45pm in Ring 4/5.
- Entry Fee:** **£20**
Prizes: As per prize money table - see front of schedule

Class 132 **TGCA Youngstock In-Hand.** Open to fillies, colts or geldings, yearling, two or three years old. Any height. No foals permitted.

Class 133 **TGCA Senior In-Hand.** Open to mares, stallions or geldings, aged four years old and over. Any height.

In-Hand Championship – First, second and third prize winners from the Youngstock and Senior In- hand classes are eligible.

Class 134 **Ridden** Open to mares, stallions and geldings, aged four years old and over, any height. The judge will not ride any exhibit.

Quest for a Star Qualifier - First, second and third prize winners in all classes are eligible.

TGCA Greatest Gelding Award

The award is aimed at encouraging the showing of geldings, therefore creating a market for often unwanted colt foals and enabling the creation of a network of potential performance prospects to represent the best Traditional Gypsy Cob breed in the World at the highest level. This award will be presented to the highest placed registered Traditional Gelding.

ENTRY CLOSING DATES

LIGHT HORSE / HEAVY HORSE / PRIVATE DRIVING

ONLINE ENTRIES close MONDAY 1st MAY

<https://www.staffscountyshowground.co.uk/staffordshire-county-show/schedules-and-entry-forms/horse-and-pony-entry-form/>

Entries MAY re-open for a few days extra if entry numbers allow. These entries will be at an increased fee, exhibitors should note it cannot be guaranteed that all classes will be re-opened

TRADE AND AGRICULTURAL TURNOUTS

This is a Victoria Food Company Trade Driving Championship qualifier. The Champion will qualify for the Grand Final to be held on Sunday 10th September 2023 at Bury Farm Equestrian Club, New Bury Farm, Mill Road, Slapton, Bucks, LU7 9BT. In the event that the Champion or First place in the class has already qualified then the Reserve or Second placing to qualify. If the Reserve or Second has also qualified, the rosette to be awarded back to the Champion or First place. Once qualified the horse, whip and vehicle may not be changed.

JUDGE: Mr D Shardlow, Cheshire

Judging: To be judged on **WEDNESDAY** at 4pm in the Main Ring during the Grand Parade. Classes will be judged simultaneously.

NO ENTRY FEE

Each exhibitor will receive £200 on appearance for one or two horse teams.

(Please note: Number of entries to these classes may be limited)

PRIZES:	1st	2nd	3rd	4th	5th
	£60	£40	£30	£25	£20

Class 138 **Heavy Trade Turnouts**, Singles, Pairs or Tandems, any breed in gears with two or four wheeled vehicles.

Class 139 **Any Agricultural Turnout**, Singles, Pairs or Tandems, any breed, drays, carts or implements.

Class 140 **Light Trade**, Single or pair of horses/ponies to be shown in a trade vehicle with four wheels or a horse/pony to be shown in a trade vehicle with two wheels. No goods to be carried.

SHIRES AND HEAVY HORSES

Incorporating Horse of the Year Show Shire Horse of the Year & British Ridden Heavy Horse Qualifiers

These classes are affiliated to the Shire Horse Society and run under their conditions.

HORSE OF THE YEAR SHOW QUALIFIERS

Classes SH9 is a qualifying class for the **Shire Horse of the Year** and Class SH11 is a qualifying class for the **British Ridden Heavy Horse of the Year**. The finals to be held at Horse of the Year Show, NEC, Birmingham, 4th to 8th October 2023. All data given upon entry of these classes is provided to Grandstand Media and stored on the Grandstand Entries system. For full policy details please visit www.grandstandentries.com. These classes will be run in accordance with the Shire Horse Society / British Ridden Heavy Horse Society however the general rules as set out in the Horse of the Year Show Rulebook will take precedence, a copy of which can be downloaded from www.hoys.co.uk. Qualification will not pass below fifth place in class SH11. Qualification to be verified by the Horse of the Year Show Office.

Class SH11 entitles eligible amateur combinations to earn points for the Premier Amateur League, with the opportunity of gaining a wildcard place at HOYS 2023. This is open to current TSR members or those that have signed up to the Premier League 2023. For more information see www.theshowingregister.co.uk.

MOBBERLEY & DISTRICT CHAMPION SHIRE FOAL ACCUMULATOR

Class SH8 is part of the Mobberley & District Champion Foal of the Year Accumulator. Points are awarded as follows 1st – 5 points, 2nd - 3 points and 3rd – 1 point. Rules and accumulator forms may be obtained from Marian Hardy – 01625 861828.

YOUNG HANDLER OF THE YEAR AWARD: This show is a qualifier for the Shire Horse Young Handler of the Year – final to be held in conjunction with the Midland Shire Foal Society Annual Show on Saturday 23rd September 2023. The winner of class SH10 will go forward to compete for the Young Handler of the Year Award and will also receive the Society qualifying rosette.

The Young Handler class is also affiliated to the Shire Horse Society Young Handler Accumulator award. Points will be awarded from 1st to 5th, with 5 points to the winner, 4 points to 2nd placed, 3 points to 3rd place, 2 points to 4th place and 1 point to 5th place.

JUDGE: **Classes SH1 – SH10** Mr D Shardlow, Cheshire
 Class SH11 **Ride** – Mr N Fuller, Essex
 Conformation – Mr D Shardlow, Cheshire

Judging: All classes will be judged on **WEDNESDAY**
 Class SH11 to be judged at 10am in the Main Ring (Section C)
 Classes SH1 to SH10 to be judged at 11.30am in Ring 6

Note all exhibitors are expected to parade in the Grand Parade of Livestock at 4pm in the Main Ring.

Entry Fee: **Classes SH1 – SH8** **£15**
 Class SH10 **No entry fee**
 Classes SH9 & SH11 **£41** (including £16 Horse of the Year Show contribution)

PRIZES: 1st - £45 2nd - £30 3rd - £22 4th - £15
NOTE - RP & ES Whitehouse have kindly given a donation to enhance the above prize money by £5 for each prize-winner in the In-Hand Shire Horse classes SH2 to SH8.

Class SH1 **In-Hand Heavy Horse other than Shire**, any age, any sex and registered in the main Stud Books of the Clydesdale, Suffolk or Percheron Society. Part-bred animals are not eligible to compete in this class.

Class SH2 **Shire Stallion**, 3 years and over.

Class SH3 **Shire Gelding**, 3 years old and over.

Class SH4 **Shire Barren Mare**, 3 years old and over.

Class SH5 **Shire Colt, Filly or Gelding**, 2 years old.

Class SH6 **Shire Yearling Colt, Filly or Gelding.**

Class SH7 **Shire Brood Mare**, to be shown with her own foal at foot.

Class SH8 **Shire Colt or Filly Foal.**

Class SH9 **Shire Horse of the Year Show Qualifying Class Supported by the Shire Horse Society.** Open to pure bred fully registered shire horses of 2 years old or over that have been exhibited in their appropriate breed class at this Show. This class is run under the rules of the Shire Horse Society; however, Horse of the Year Show Rules take precedence, a copy of which can be downloaded from www.hoys.co.uk.

Championship: 1st and 2nd placed exhibitors in the In-Hand Shire classes SH2 – SH9 are eligible.

Class SH10 **The Shire Young Handlers Class.** All exhibitors to be between 12 and 18 years of age (inclusive) on day of show. No stallions & no animals under two years of age to be led. Each Young Handler forward will receive £10 appearance money very kindly donated by **MORDEARG SHIRES**. Rosettes awarded 1st – 6th and then specials for all exhibitors. **ENTRIES WILL ALSO TAKEN ON THE DAY OF THE SHOW AT THE RINGSIDE. THERE IS NO ENTRY FEE.**

Class SH11 British Ridden Heavy Horse of the Year. Open to purebred mares, geldings and stallions 4 years old or over, that are registered in the main British Stud Books of the Shire, Clydesdale, Suffolk or Percheron Horse Societies, to be ridden. Part-bred horses are not eligible to compete. All Riders and Owners must be Members of either the Shire Horse Society, The Clydesdale Horse Society, The Suffolk Horse Society or British Percheron Horse Society. For Clydesdale horses, they are to hold a Clydesdale Horse Society passport with full pedigree details, stallions and mares are to appear in the main section of the Clydesdale Horse stud book and geldings are to have appeared as produce of their dam.

Qualifier will be marked in the following way:

Ride 50 maximum

Conformation 50 maximum

In the case of equality, the horse with the highest conformation mark will be deemed the winner. If there still be equality at this point, then the judges' decision will be final.

SPECIAL PRIZES

- SPECIAL 58 The Hardy Challenge Cup.** Presented to the best Shire Mare or Filly, 2 years old and upwards, bred by the exhibitor. Cannot be won by the same exhibitor two years in succession.
- SPECIAL 59 The H L Malpass Memorial Trophy.** For the best Shire Yearling. Kindly donated by the late Mrs Marjorie Knight.
- SPECIAL 60 The Sweep Cup.** Presented by the late Miss Elaine Smith for the best Shire Gelding any age in classes SH3, SH5 and SH6.
- SPECIAL 61 The Sherbrook Cup.** Presented by the late Miss Elaine Smith for the best Shire Foal.
- SPECIAL 62 The Walsall Cup.** Offered by the Walsall Local Committee (1905) to be presented in the ring to the Best Shire in the above classes. A memento will be given to take home.
- SPECIAL 63 The Shire Horse Society Silver Spoon and Rosette.** Awarded to the best Mare or Filly exhibited in the In-Hand Shire Classes. The Spoon and Rosette are awarded subject to the Shire Horse Society Special Conditions of Offer.
- SPECIAL 64 Mr and Mrs Fountain** kindly offer £65 to the Champion Shire in the In-Hand Shire Horse classes.
- SPECIAL 65 Mr Wass** kindly offers £50 to the reserve Champion Shire Horse in the In-Hand Shire Horse classes.

MINIATURE HORSES

These classes are open to all Miniature Horses registered and unregistered, not exceeding 92cms and will run under BMHS Showing Rules which can be found at www.bmhs.co.uk 'Showing' 'Showing Rules'.

JUDGE: Ms N Hudson, East Yorkshire

Judging: To be judged on **WEDNESDAY** at 10am in the Ring 6.

Entry Fee: £20

Prizes: As per prize money table - see front of schedule

Class 142 Open Youngstock. Yearlings and 2-year-olds

Class 143 Open 3-year-olds and above. Mares, Fillies and Geldings

Class 144 Open 3-year-olds and above. Stallions and Colts.

Championship: 1st and 2nd placed exhibitors in the Miniature Horse classes are eligible.

RULES AND REGULATIONS

- 1. Right to Cancel/Amalgamate Classes.** Any class may be cancelled if there are less than three exhibitors or less than four entries. If insufficient entries are received the Organisers have the right to amalgamate classes as they deem appropriate.
- 2. Cups and Trophies.** Cups and trophies remain the property of Staffordshire and Birmingham Agricultural Society. They will be presented in the ring but then returned to the Horse Office by the section steward. Prize winners are not permitted to take any trophy away from the showground.
- 3. Stables.** No stables are available on the Showground. Competitors may contact the following yards and make their own arrangements. Staffordshire and Birmingham Agricultural Society accept no responsibility for any stabling arrangements competitors may make.

Contact	Approx. Distance from Showground	Telephone
Mrs Julie Williams	¼ mile	01785 240257
Mrs M Snow	10 miles	01283 820310

- 4. Responsibility.** The Organisers of this Show have taken reasonable precautions to ensure the health and safety of everyone present. For these measures to be effective, everyone must take all reasonable precautions to avoid and prevent accidents occurring and must obey the instructions of the Organisers and all the Officials and Stewards. The Society, its Officers, Servants, or Agents shall not be responsible for any injury, damage or loss however caused to any animal, article or other property belonging to the exhibitor and the exhibitor agrees to indemnify the Society in respect of any costs in connection with any claims made upon the Society as a result of the actions or omissions of the exhibitor or of any employee of the exhibitor. Each exhibitor shall be solely responsible for any loss, injury or damage that may be done to, or occasioned from any animal, article or property exhibited or brought on to the Showground by him and he shall indemnify and hold harmless the Society from and against all actions, suits, expenses and claims on account of or in respect of any such damage or injury which may be caused or occasioned.
- 5. Attendants.** Exhibitors or their attendants are responsible for their exhibits during the whole time they are at the Show. The Society expects all exhibitors to have had experience in display of livestock at shows and should be aware of the distractions that can be caused to livestock in their possession.
- 6. Judges.** The Judges named in the Society's Prize Schedule and the Show Catalogue or Programme have consented and been appointed to act as Judges in the events indicated. The Committee reserves the right to appoint substitutes for any who may be unavoidably prevented from attending and all entries are accepted upon that understanding.
- 7. Judging.** Judging will commence, as near as circumstances allow, at the times stated in the schedule under the respective sectional headings and exhibitors will be held responsible for their exhibits being in the judging ring at the commencement of their class.
- 8. Veterinary.** No animal suffering from a contagious disease may be brought onto the Showground. In the event of a Veterinary Surgeon advising the removal of any animal from the Show his decision shall be final and immediately complied with.
Equine Influenza All horses and ponies are required to be effectively vaccinated against Equine Influenza and a full vaccination history and passport must be available on request. Horses are to either hold a valid annual vaccination or have had the first two injections of a new course, with the second being administered at least 7 days prior to the show. Foals will not be expected to have commenced their primary course of Influenza vaccination before six months of age.

- 9. Objections.** Objections to entries or awards must be made in writing within one hour of the completion of the judging of the Class or Special concerned, accompanied by a deposit of £25 for each protest. The Chief Horse/Pony Steward will investigate the matter and their decision shall be final.
- 10. Stewards - Power to enforce Regulations.** The Committee delegates full power to the Chief Steward to enforce the Society's Rules and Regulations.
- 11. Exhibitors Vehicles.** All vehicles must be parked at the places provided and must not under any circumstances be left in stock lines or other avenues. All entries are accepted on the understanding that this instruction will be complied with.
- 12. Working-In Areas.** All horses and ponies must work-in in the area provided. Strictly no warming up in any showing ring, collecting rings must be used for this purpose. Anyone infringing this rule will be disqualified and no refund of entry fees made.
- 13. Hats.** Anyone riding a horse or pony must wear a hard hat of a standard approved by the governing body under whose rules they are exhibiting. All hats must be properly fastened.
- 14. Dogs.** All dogs must always be kept on a lead and under proper control.
- 15. Interpretation of the Rules and Regulations.** The Society reserves to itself by its committee the sole and absolute right to interpret these Rules and Regulations or any other prescribed Conditions arbitrarily to settle and determine all matters, questions or differences in regard thereto, or otherwise arising out of or connected with or incidental to the Show. Also, to refuse or to cancel any entries, to postpone or abandon the Show and relax conditions as the Society may deem expedient.
- 16. Entries.** All entries must be made on the official online entry form together with the correct entry fees. No telephone entries will be accepted. Under no circumstances will entry fees be refunded in case of cancellation of entries by an exhibitor.
- 17. Breed Society Rules.** All persons entering, competing, or exhibiting an animal in a class covered by a Breed Society either to which Staffordshire County Show is affiliated or which is affiliated to Staffordshire County Show shall be deemed to have consented to the jurisdiction of the relevant Breed Society and shall be subject to its constitution and rules (including any disciplinary procedures)



Location and Directions

Postcode ST18 OBD

The Staffordshire County Show is held at the County Showground, Stafford situated on the main A518 Stafford to Uttoxeter road, three miles from Stafford and five miles from Junction 14 of the M6 Motorway.



**Save
the
date!**

Horse of the Year Show

4th - 8th OCTOBER 2023

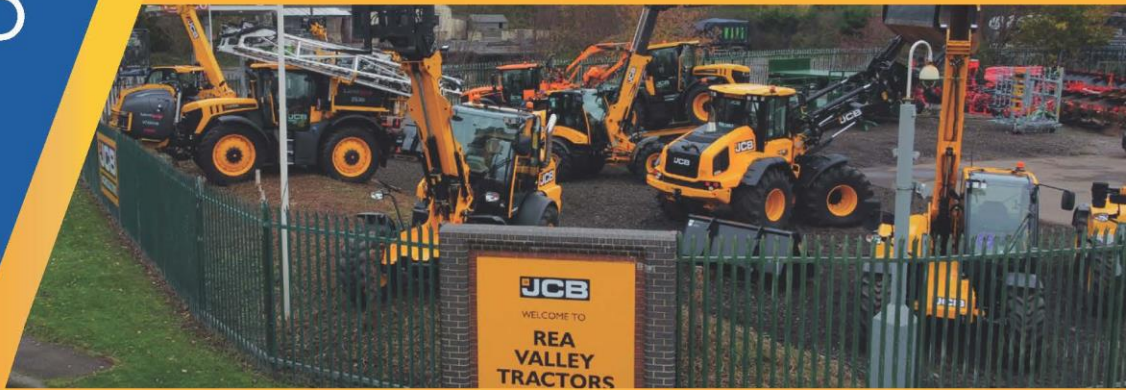


WWW.HOYS.CO.UK





- ▶ SALES
- ▶ SERVICE
- ▶ PARTS
- ▶ USED



SHREWSBURY
T 01743 289104

NEWPORT
T 01952 822922

SUDBURY
T 01283 821345

WELSHPOOL
T 01938 553900

MIDDLEWICH
T 01270 901062

DENBIGH
T 01745 703226

ORMSKIRK
T 01695 213139

(Head Office) RVT SHREWSBURY, Seven Acres, Newport Road, Shrewsbury, SY4 4RR T: 01743 289104

reavalleytractors.com

PART OF THE DUNSTALL HOLDINGS GROUP

